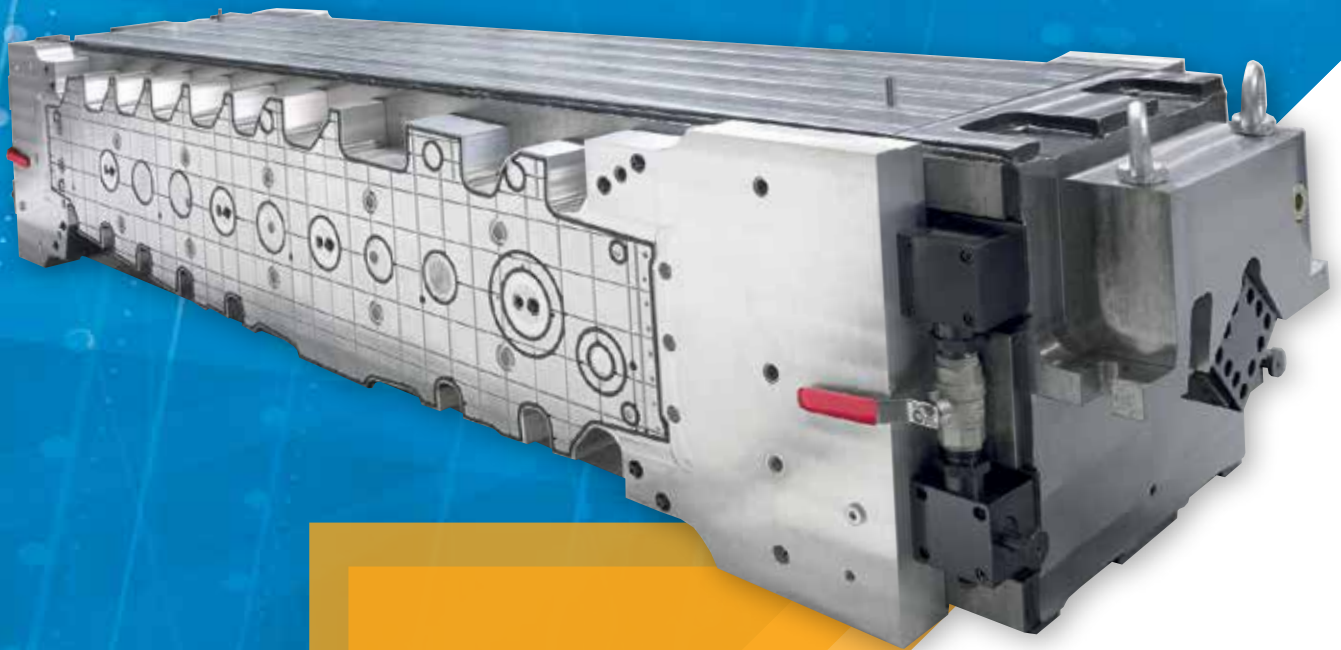


HYFORE

— WORKHOLDING —

"It's gripping stuff..."

PORTFOLIO



GETTING THE MOST OUT OF CNC MACHINES

Hyfore Workholding can assist its clients to realise significant savings in medium and high-volume CNC production using cost effective bespoke workholding systems that helps increase machine utilisation.

Hyfore Workholding Ltd specialises in the design and manufacture of high quality, bespoke workholding systems for metalcutting, welding and assembly applications.

COST-EFFECTIVE BESPOKE DESIGN

Hyfore's highly-qualified, specialist engineers are dedicated to provide complete solutions to customers' manufacturing requirements and offer complete turnkey solutions including:

- + Mechanical and electronic design utilising CAD/CAM 3D modelling. This capability gives us a clear advantage when viewing complex fixtures and tool cutter paths, in relation to the fixture design.
- + Quality testing and prove-out to agreed standards
- + Project management
- + After-sales service support
- + Simultaneous engineering contracts

ROTARY DEVICES

Our range of rotary devices for workpiece manipulation includes fourth and fifth-axis rotaries, indexers and rotary couplings.

Hyfore's unique blend of innovative design, quality, precision, manufacturing capability and in-depth experience make us the natural partner in your quest to maintain a truly World Class production organisation.

HYDRAULIC FIXTURES & ACCESSORIES

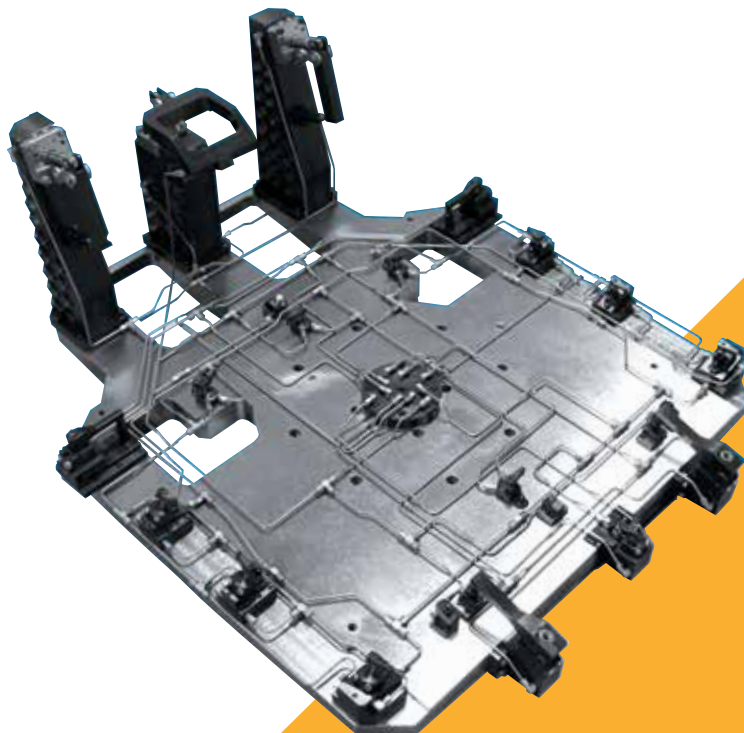
Hyfore designs and manufactures a wide range of component fixturing devices, both powerclamped and manual.

Each device can be hard-mounted to the machine table or mounted in Hyfore-designed rotary devices for the machining of multiple component faces in one clamping. Our range of hydraulic clamps are fully designed and manufactured in-house. They are recognised as being amongst the best systems available in the industry, due to their compact design and high clamping force.

WORK-PIECE HOLDING

To complement Hyfore's design of powered fixtures we offer a range of standard designs for work-piece fixtures and base-plates, including:

- + Tombstone fixtures (one piece castings and fabricated options)
- + Cubes (one piece castings & fabricated options)
- + Snap-on (zero point) plates
- + Fixture plates to suit any base elements
- + A range of clamps and devices
- + Special fixtures including: design, development and prove-out using manual pneumatic and hydraulic clamping and chuck options

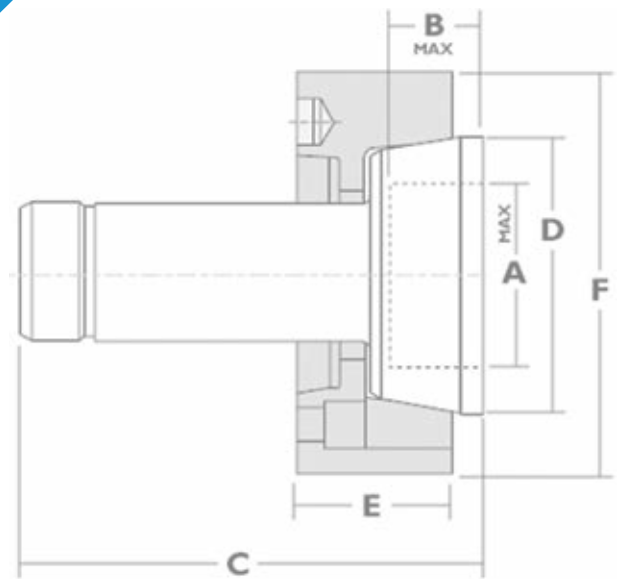




REFINING YOUR PROCESSES

Hyfore Workholding brings a whole new level of capabilities – helping customers through prototyping to low-volume manufacture.

Hyfore Workholding offers bespoke prototyping, low volume manufacturing and component verification service. Equipped with the 3 and 4-axis machining centres, CNC turning machines and the latest CMM inspection equipment, Hyfore Workholding is there to help customers develop and verify their processes, manufacture prototypes and carry out one-off and low-volume machining as a pre-production, product development or special requirements service.



LOW VOLUME PRODUCTION

SUBCONTRACT SERVICES

REVERSE ENGINEERING

CMM INSPECTION

PROTOTYPING



CAN YOUR EXISTING CMM MACHINE COPE WITH ALL THE COMPONENTS YOU CURRENTLY MANUFACTURE?

- + Sub-contract CMM measurement service available from Hyfore at short notice
- + The Hyfore CMM equipment can accommodate part measurements up to X950/Y1605/Z800

DO YOU HAVE A CURRENT BOTTLENECK SITUATION WITH YOUR OWN CMM?

Then contact Hyfore to see how we can help.



CMM SERVICE

The Very Latest Mitutoyo
CMM Temperature
Controlled Room

BRIEF SPECIFICATIONS

- + CRYSTA-APEX S9168
- + X 950 mm / Y 1605 mm / Z 800 mm
- + MCOSMOS-3
- + For full integration with 3D models
- + Both on line and off line programming capabilities
- + Scanning & Profile Analysis Program





Hyfore Workholding has over 100,000 individual products for sale covering the spectrum from collets and workholding accessories to precision engineering equipment such as probing and quality control products as well as everyday consumables from leading brands.

OVER 100,000 PRODUCTS...

WWW.HYFORE.SHOP





WORKHOLDING

- + Collets for Lathes
- + Expanding Mandrels
- + Collet Chucks
- + Manual & Power Chucks
- + Vices – Standard & 5th Axis
- + Magnetic Clamping
- + Revolving Centres
- + Custom Workholding/Fixtures

TOOLING

- + BT/HSK/Face & Taper
- + VDI
- + BMT
- + Block Tooling
- + ER Collet Chucks / Collets
- + Bushings
- + Driven Tooling
- + Angle Heads

ROTARY

- + Indexers
- + 4th Axis
- + 5th Axis
- + Trunnion Supports
- + Tailstocks

MACHINE ACCESSORIES

- + Tooling Trolleys
- + Cabinets
- + Benches
- + Hand Tools
- + Pallet Changing System
- + Probes
- + Swarf Bins

METROLOGY

- + Pre-Setters
- + Micrometer
- + Calipers
- + Gauges
- + *Sub Contract CMM Service* – Mitutoyo CMM Programming

OUR TRUSTED PARTNERS



Acrow was founded in 1985 with their factory being located at Taichung City, Taiwan. Acrow has been one of the leading manufacturers specialising in CNC Tooling Systems in Taiwan. The plant of Acrow is over 7,500 square meters. Always striving for the best, Acrow installs CNC lathes, CNC machining centers and CNC grinding machines to manufacture and inspect with electronic air gauges, numerical control machines and other high precision inspection instruments.

Acrow produces more than 90,000 pcs toolholders every year and successfully use private brand "Acrow" distributes into Taiwan, China, Europe, Germany, Swiss, Japan, USA, Australia, Southeast Asia, Russia and South Africa markets.

Acrow is continually investing in R & D as well as the new facilities. It is for the purpose to meet and exceed customers' expectations in quality demand

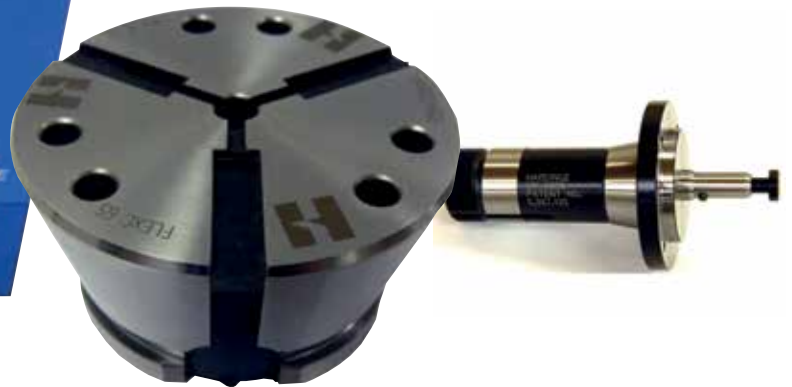


The rich heritage of Buck Chuck USA continues to remain the industry standard for quality. For over 75 years Buck Chuck USA has engineered and built the finest Workholding products. In 2013 Buck Chuck became part of the Hardinge Group of companies, serving the Workholding Market Worldwide offering a complete line of High Quality Workholding. Buck Chuck continues to improve its product offering with the introduction of the new ATSC and the recently improved AT chuck lines. At Buck Chuck, we manufacture our chucks to be much more precise than our competition.

Buck Chuck pride themselves on chucks that are the best in the business. Whatever the need, Buck Chuck can help. The Steel bodied ATSC has set a new industry benchmark for quality. Both of these products are made to strict ISO standards and have the Buck Chuck trademarked Ajust-Tru® feature, which allows concentricity adjustments to near zero.

HARDINGE WORKHOLDING

Hardinge is the leader in providing a wide range of highly reliable turning, milling, grinding and workholding solutions. They never compromise on product design, so customers can count on Hardinge to help them make the right part to the required specification, every time. The breadth and depth of product solutions are unmatched in the industry, enabling us to support a variety of market applications, including aerospace, automotive, medical, energy, construction, agriculture, mold, tool and die, and more.



KOSMEK

KOSMEK Japan has more than 30 years experience of clamping solution for Work Holding, Mold- and Die-Change, Press and Factory Automation.

Optimisation is the Value in machining through innovative & patented KOSMEK clamping technology

The second core competence are the high power pneumatic clamps. KOSMEK makes it possible with pneumatic clamping elements to achieve hydraulic clamping forces.

High performance pneumatic solutions has once again demonstrated its technological leadership, which now covers more than 300 patents.

The customer benefit is higher added value - improved workplace safety and reliability

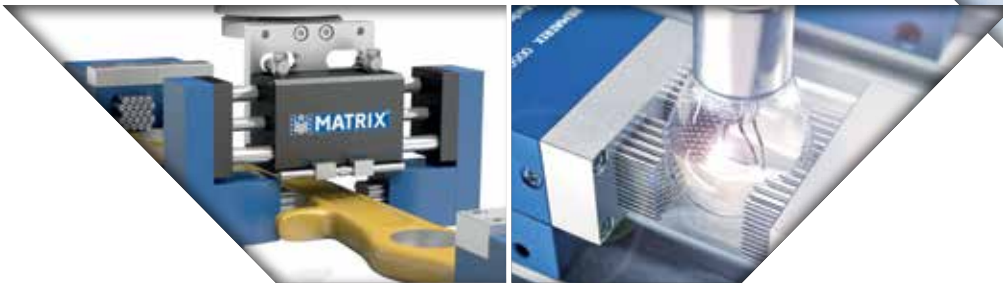




Since it was founded in 1997, MATRIX GmbH has been a developer of mold clamping systems. The idea of developing clamping jaws based on the pin cushion principle was the first step towards a true innovation.

Following a development time of just 11 months to the first prototype and patenting, the company initially focused on the field of metrology and acquired a number of prestigious customers.

The MATRIX clamping systems went into series production in 1999. Various modules with differently-sized pin fields, for example, as well as additional modules relevant in measuring technology for the improved securing of complex components are introduced into the MATRIX GmbH portfolio.



Founded in 1969, Midaco is a leading global manufacturer of innovative products that are designed to save manufacturing time; increase output and give your company a competitive edge while realizing additional profit. Our products include a full line of state-of-the-art pallet changers and supplemental items for CNC machining centers to ensure our customers receive the most out of their investment.

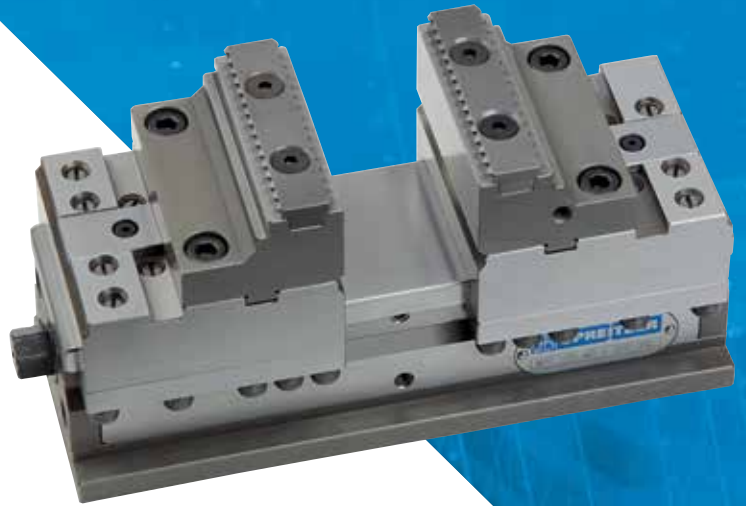
We invite new and existing customers as well as interested parties to explore our website to easily browse our product offerings, look at our brochures and informational materials and even use our Payback Calculator for a rough estimate of how much money Midaco can save you on an annual and monthly basis.





The name "SPREITZER Precision Tools" stands for the development, construction and production of complex system solutions in the field of clamping and measuring since 1983. Our areas of performance stretch from modular clamping systems and modular construction systems for machining centres to manual quality control and construction of special devices, touching on mechanical clamping systems along the way.

Development and construction is carried out on modern and high-performance 3D-CAD-work stations in order to shorten the lead-times for routine jobs. As a result of this, more time can be spent on the more creative parts of a project.



Engineering Excellence. Exactly.

UCAM specialises into manufacturing of precision CNC Rotary Tables, Index Tables and Pallet Changing Solutions for Machine Tool applications.

UCAM products are known for their quality, reliability and performance in challenging and high demanding applications in various industries such as Automobile, Aerospace, Power Generation, Medical & Orthopedic Implants, Oil & Gas exploration, Pumps & Valves, General Engineering etc.



OTHER TRUSTED PARTNERS





"It's gripping stuff..."

Hyfore Engineering Limited
Unit 3, 67 Blackhorse Road, Longford, Coventry, CV6 6DP

Tel: 024 7699 3153 | Email: sales@hyfore.com | hyfore.com | hyfore.shop