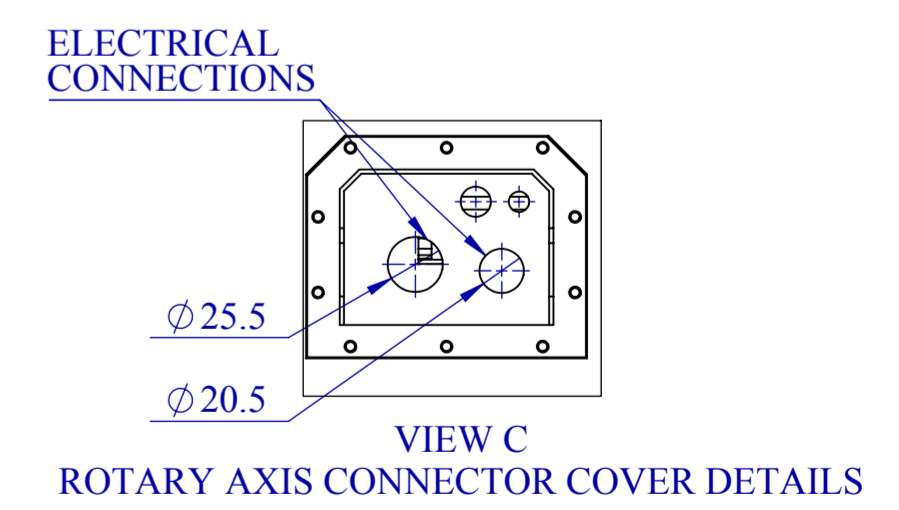
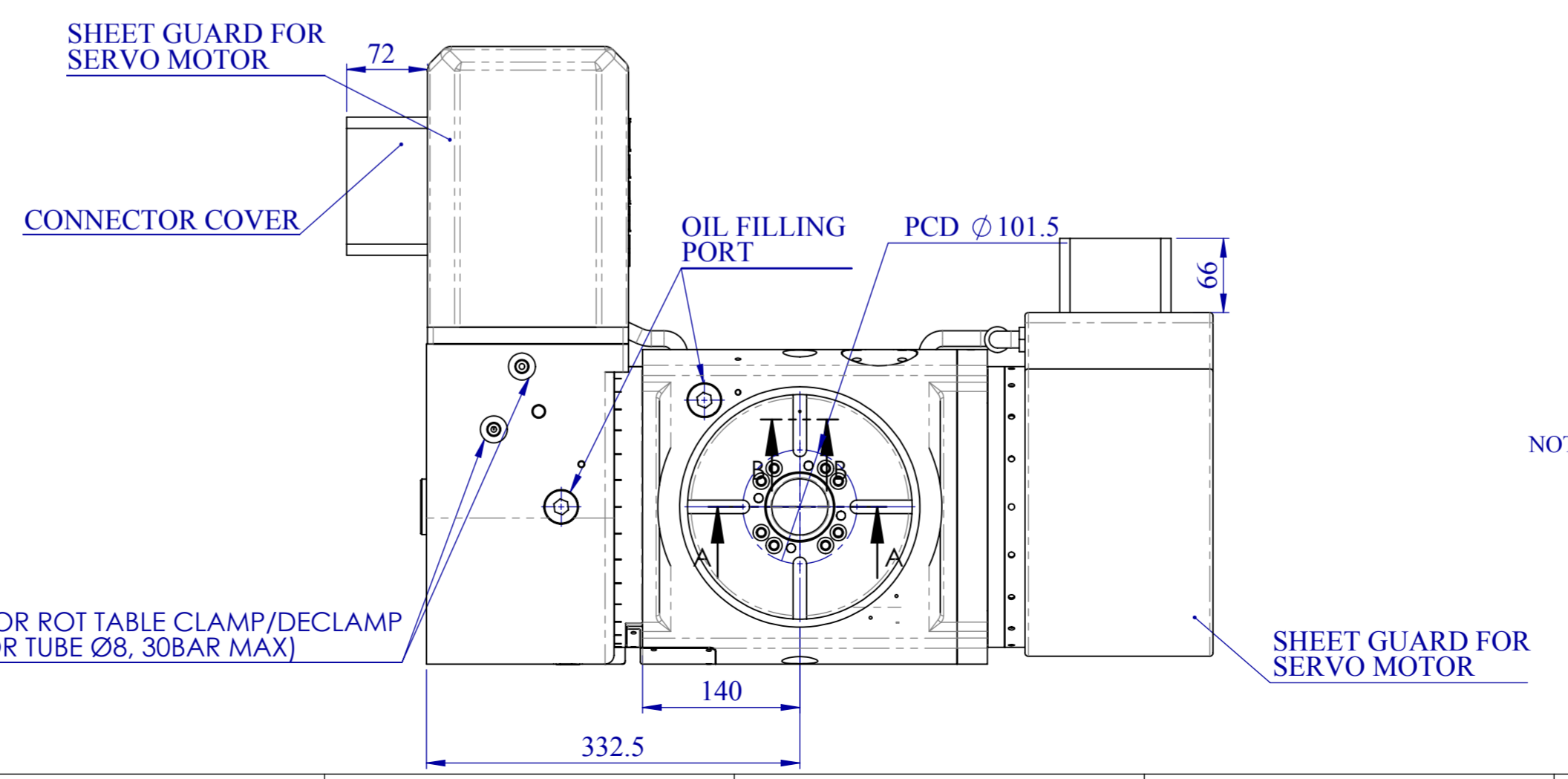
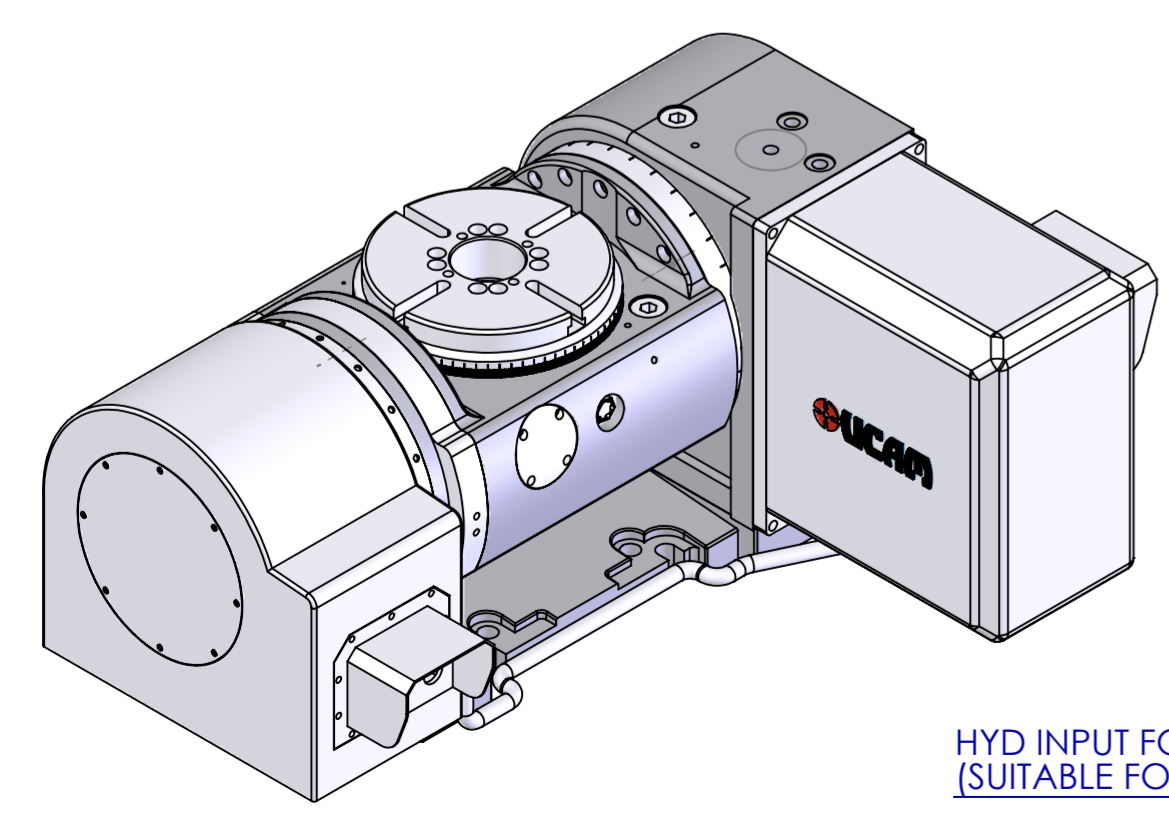
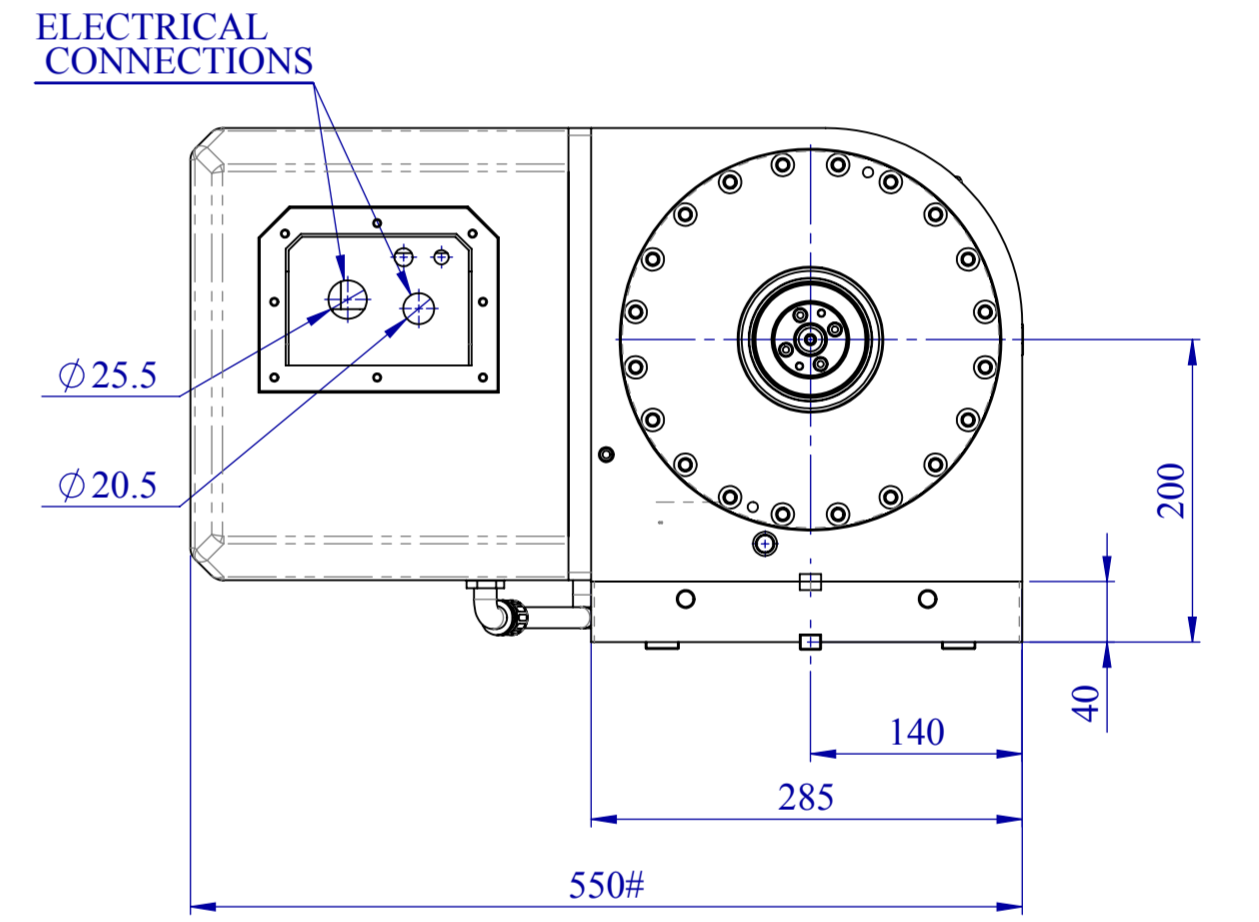
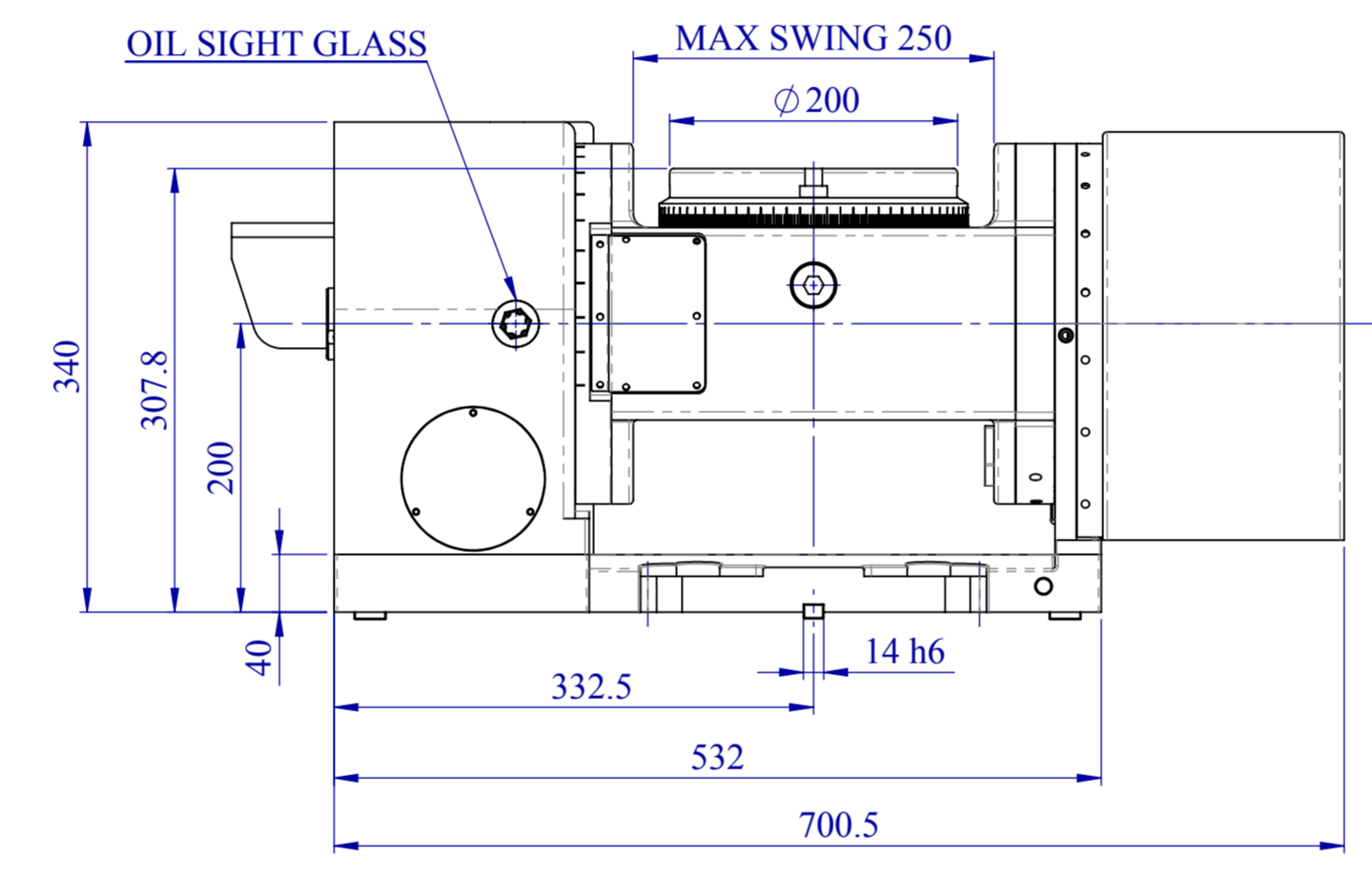
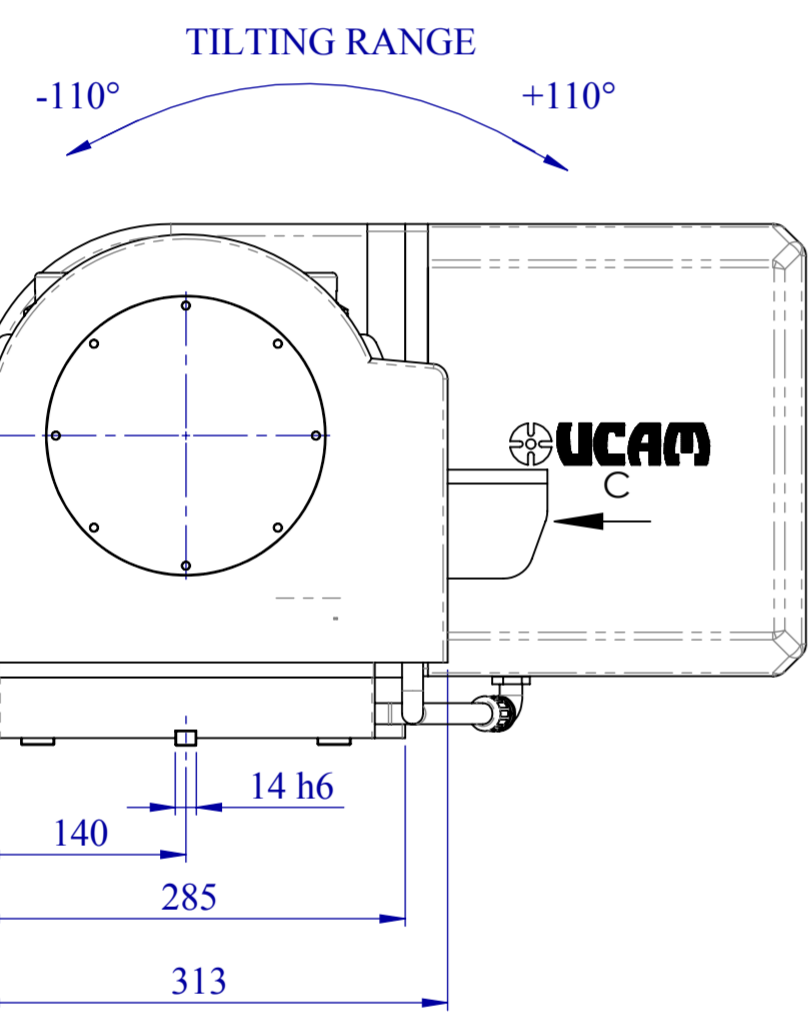
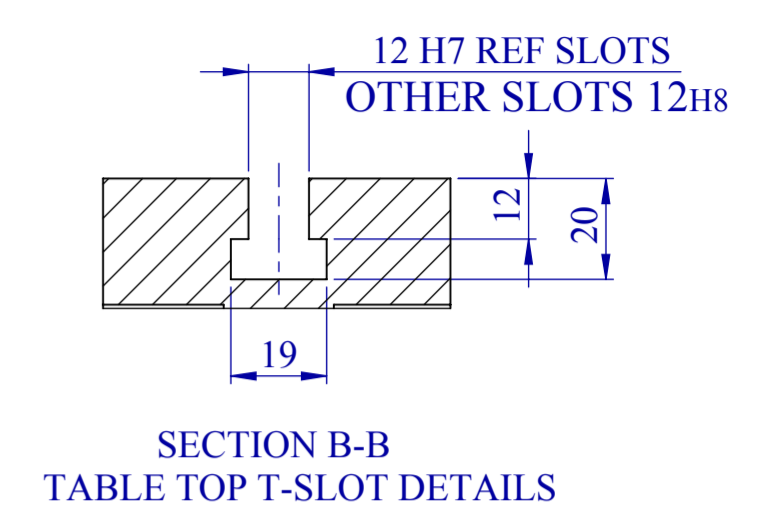
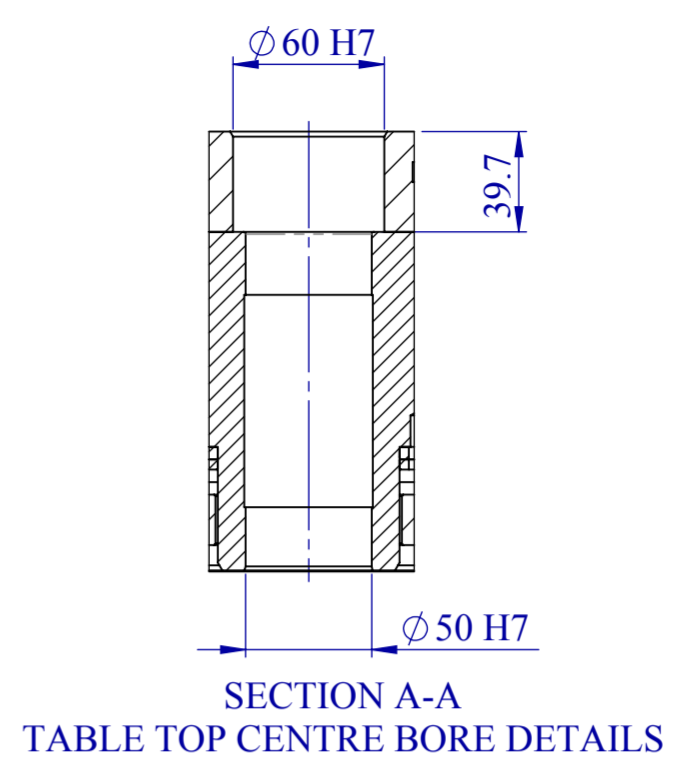
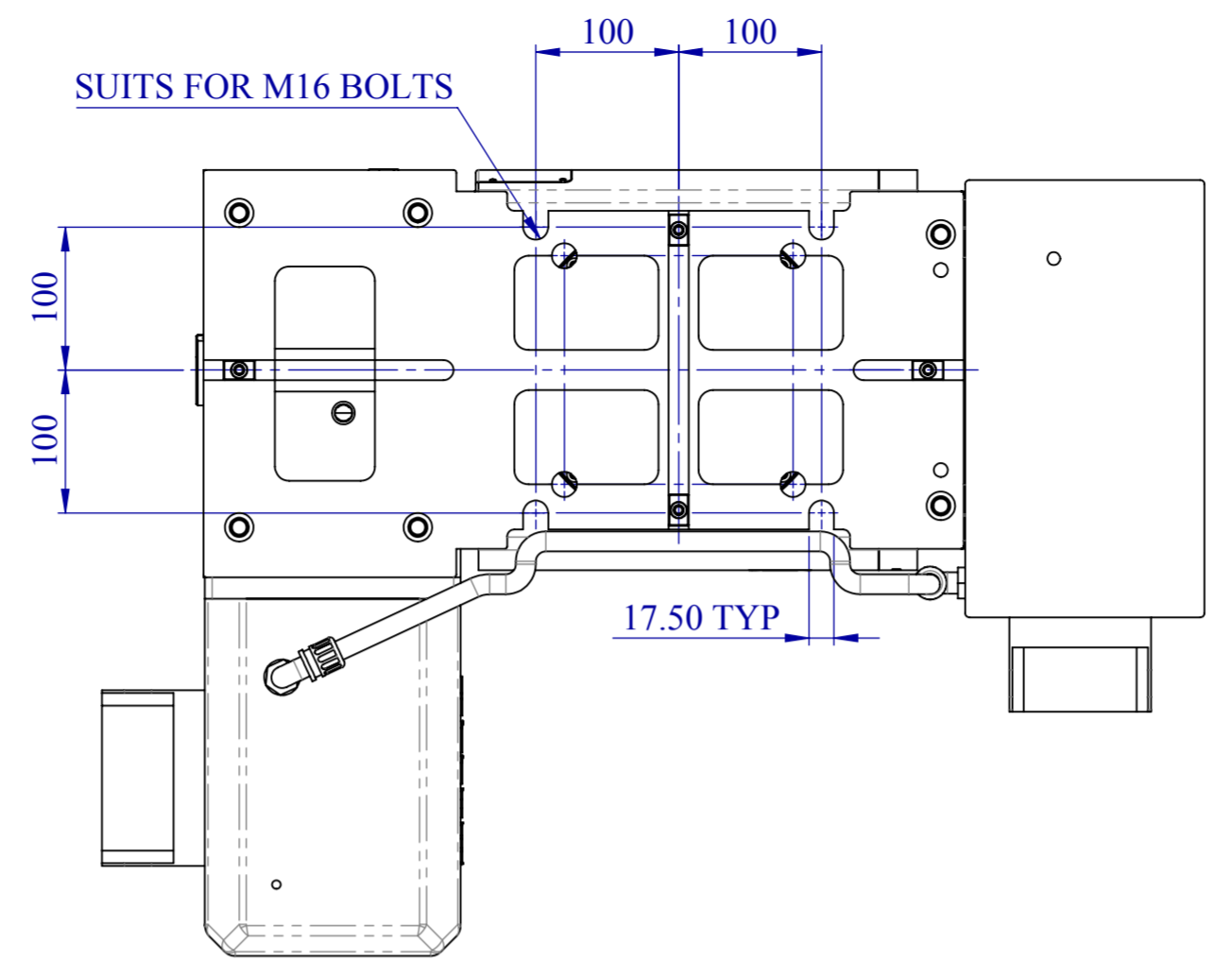
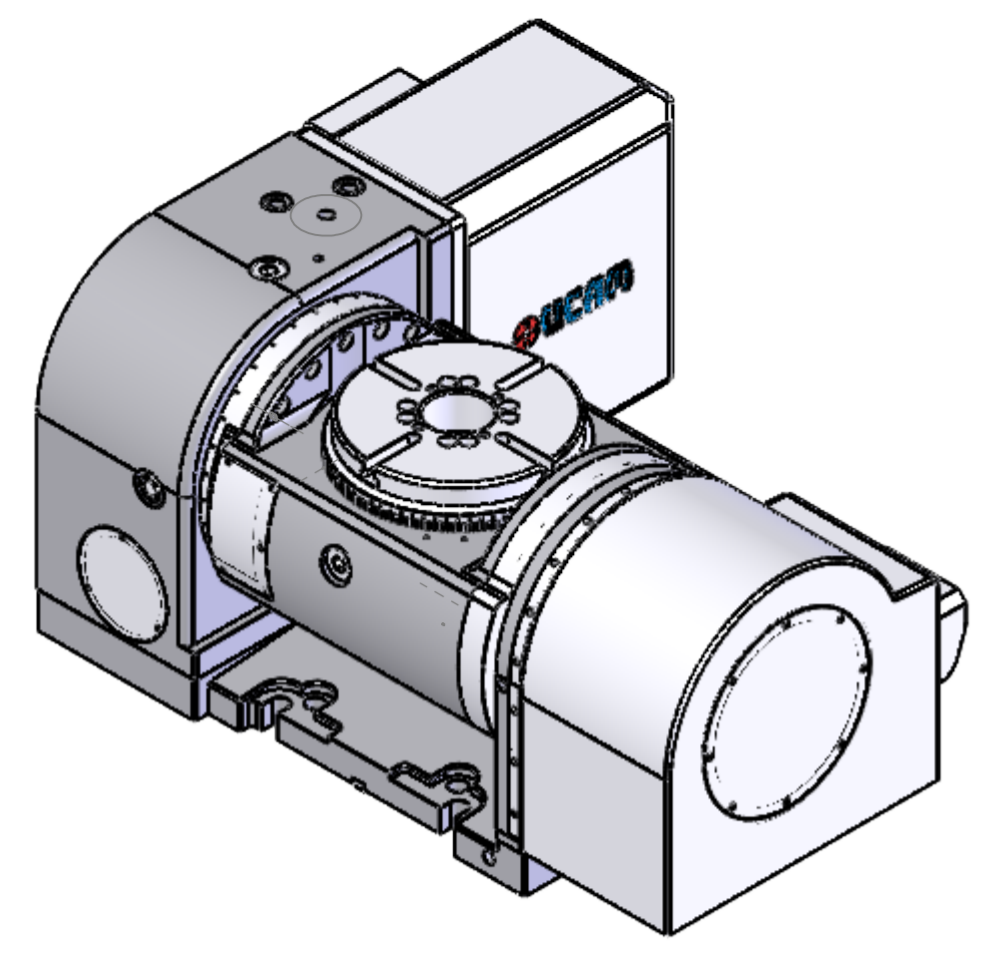


USSR-201-TN LAYOUT DRAWING



NOTE: DIMENSIONS MARKED AS '# ' IS DEPENDENT ON MOTOR BEING USED.

FOR MOUNTING INSTRUCTIONS, SEE UCAM OPERATOR'S MANUAL.

GO TO www.ucamind.com FOR FURTHER ROTARY SPECIFICATIONS

	Scale :	MODEL USSR-201-TN
	NTS	REVISION : 0
All Dimns. are in MM		DATE: 07.08.2018

SPECIFICATIONS



Model		URH-201-TN			
		units	Value		
Dimensions	Turn Table diameter	mm	ø200		
	Swing	mm	ø200		
	Center Bore Diameter (H7)	mm	ø60		
	T-Slot size	Ref slots (H7) 2nos	mm	12	
		Other slots (H8) 2nos	mm	12	
Tenon slot size (H7)		mm	14		
Operational	Servo Motor Torque	Rot Axis	Nm	3	
		Tilt Axis	Nm	6	
	Speed reduction ration	Rot Axis	-	1:90	
		Tilt Axis	-	1:120	
	Table gyration angle/pulse		-	0.001°	
	Table rotation speed (Motor 3000 rpm)	Rot Axis	rpm	33.3	
		Tilt Axis	rpm	25	
Tilting Range		degree	-110to+110		
Load and Force	Load capacity	Horizontal	kg	100	
		Vertical	kg	65	
	Clamp torque(Pneumatic @ 5 bar)	Rot Axis	Nm	380	
		Tilt Axis	Nm	550	
	Clamp torque(Hydraulic @ 30 bar)	Rot Axis	Nm	650	
Tilt Axis		Nm	750		
Driving torque		Nm	250		
Accuracies	Indexing Accuracy	Rot Axis	Arc sec	+/-15"	
		Tilt Axis	Arc sec	+/-30"	
Repeatability		Arc sec	4"		
Net Weight (approx) (Rotary table only)			kg	200	
Recommended Drive (Rot Axis)	Motor Models *				
	Fanuc	Beta 8iS (Taper shaft/Straight Shaft)			
		Beta 8iSc (Taper Shaft/Straight Shaft)			
		Beta iF4 (Taper shaft/Straight Shaft)			
		Alpha iS4 (Taper shaft/Straight Shaft)			
	Siemens	1FK7060			
Mitsubishi	HF104S / HG104S				
Recommended Drive (Tilt Axis)	Fanuc	Beta 8iS (Taper shaft/Straight Shaft)			
		Beta 8iSc (Taper Shaft/Straight Shaft)			
		Beta iF8 (Taper shaft/Straight Shaft)			
		Alpha iS8 (Taper shaft/Straight Shaft)			
	Siemens	1FK7060			
	Mitsubishi	HF123S / HG123S			