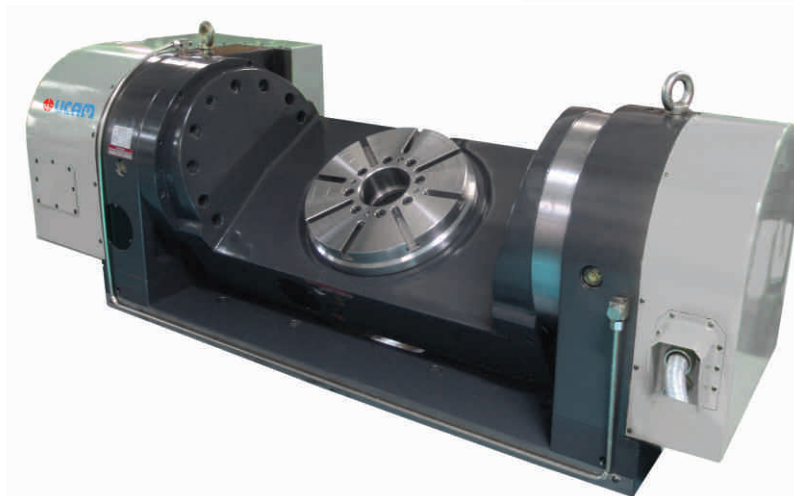
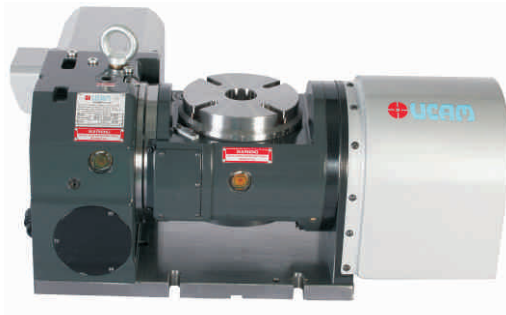


Tilting Rotary Table



CNC TILTING ROTARY TABLE

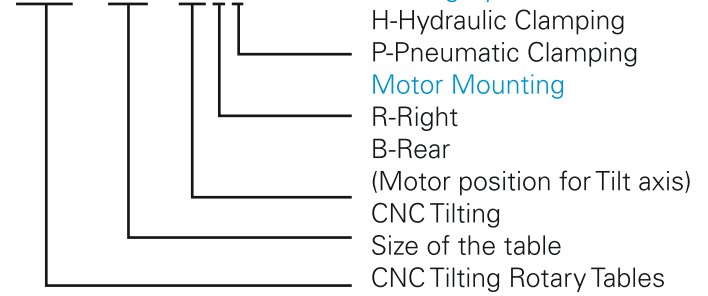


Features:

- Pneumatic/Hydraulic Clamping
- Pre Loaded Axial Radial Roller Bearing.
- Dual Lead Worm Gear set.

Ordering code for CNC Rotary Tables

URH - 200 - TNRP



Specification

Model		URH-153-TN	URH-200-TN	USSR-201-TN
Turn Table diameter (mm)		ø150	ø200	ø200
Swing (mm)		ø190	ø200	ø250
Center Bore diameter (H7) (mm)		ø40	ø60	ø60
T-Slot size (mm)	Ref slots (H7)	10x2	12x2	12x2
	Other slots (H8)	10x2	12x2	12x2
Tenon Slot size (H7) (mm)		14	14	14
Servo Motor Torque (Nm) [#]	Rotary axis	2	3	3
	Tilting axis	4	4	6
Speed Reduction ratio	Rotary axis	1:60	1:90	1:90
	Tilting axis	1:90	1:90	1:120
Table Gyration angle/pulse		0.001°	0.001°	0.001°
Table Rotation speed (rpm) (Motor 3000 rpm)	Rotary axis	50	33.3	33.3
	Tilting axis	33.3	33.3	25
Load capacity (kgs)	Horizontal	35	80	100
	Vertical	20	45	65
Clamp Torque (Nm) Hydraulic 30 bar	Rotary axis	300	500	650
	Tilting axis	300	500	750
Clamp Torque ^ (Nm) Pneumatic 5 bar	Rotary axis	100	250	380
	Tilting axis	100	250	550
Driving Torque (Nm)		100	250	250
Indexing Accuracy* (Arc Sec)	Rotary axis	±30"	±15"	±15"
	Tilting axis	±45"	±30"	±30"
Repeatability (Arc Sec)		4"	4"	4"
Tilting angle (Degree)		-110 to	-20 to	-110 to
		+ 110	+ 110	+ 110
Net Weight (kg) (approx)		75	170	200

* Higher Accuracy ± 5" on request

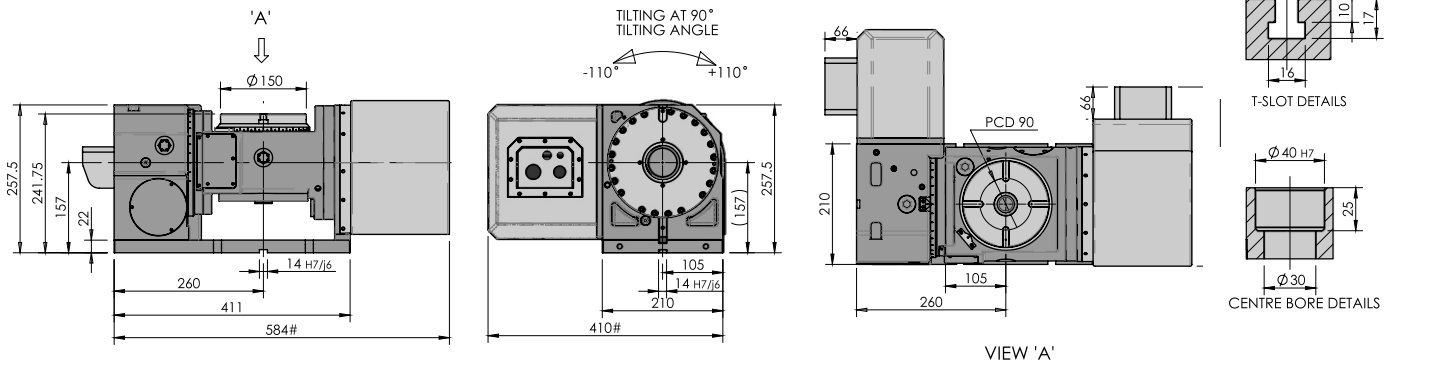
^ Also available with Higher Clamp Torque

Check motor models on Page No. 72

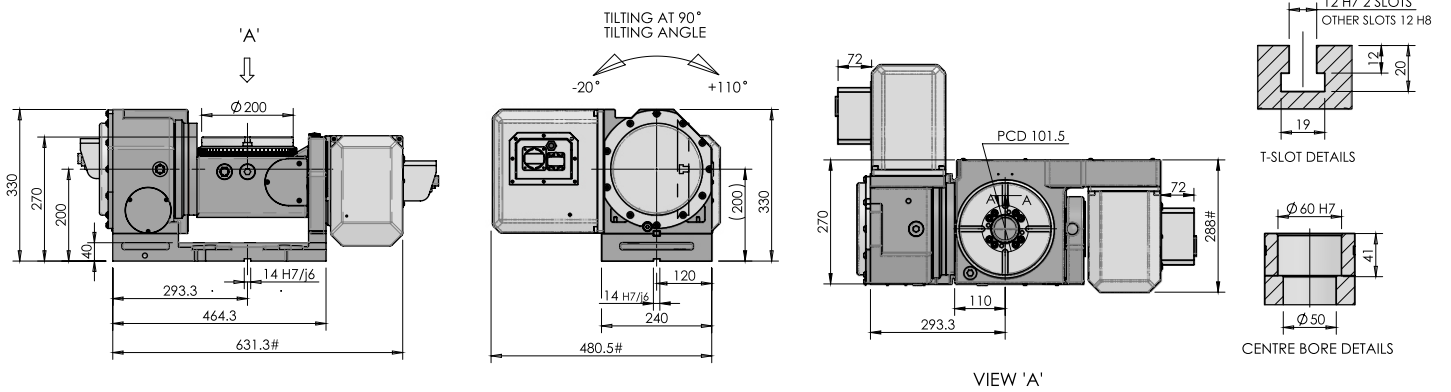
Option available with pressurisation - Please contact us



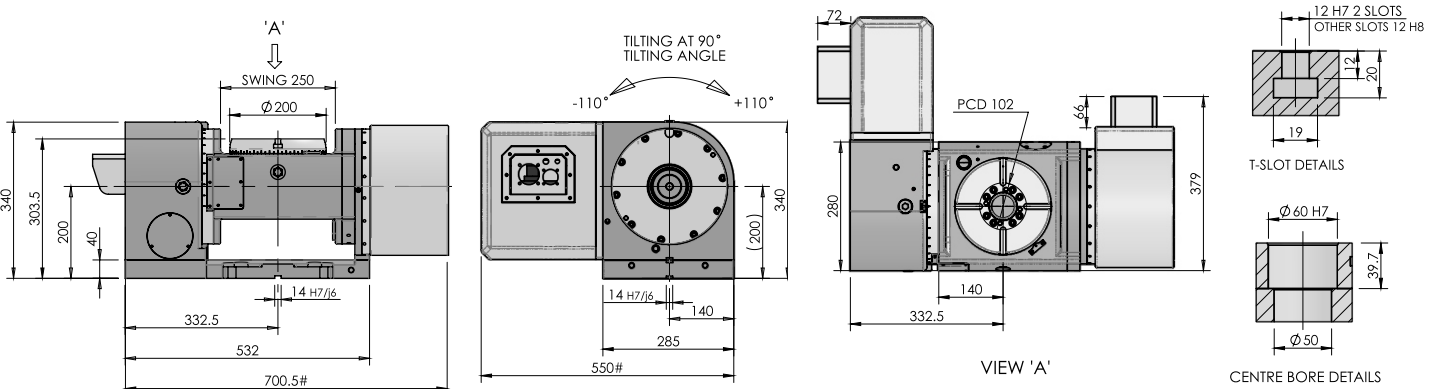
Model URH-153-TN



Model URH-200-TN



Model USSR-201-TN



Dimension Marked as '#' is Dependent on Motor being used

CNC TILTING ROTARY TABLE

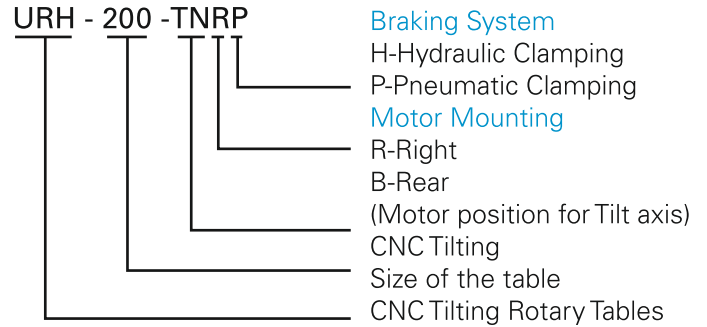


Features:

- Pneumatic / Hydraulic Clamping
- Pre Loaded Axial Radial Roller Bearing.
- Dual Lead Worm Gear set.

Ordering code for CNC Rotary Tables

URH - 200 - TNRP



Specification

Model		ULSR-201-TN	USSR-251-TN	URH-320-TN
Turn Table diameter (mm)		ø200	ø250	ø320
Swing (mm)		ø400	ø250	ø320
Center Bore diameter (H7) (mm)		ø60	ø60	ø100
T-Slot size (mm)	Ref slots (H7)	12x2	12x2	14x2
	Other slots (H8)	12x2	12x6	14x6
Tenon Slot size (H7) (mm)		14	14	18
Servo Motor Torque (Nm) [#]	Rotary axis	3	3	6
	Tilting axis	6	6	8
Speed Reduction ratio	Rotary axis	1:90	1:90	1:180
	Tilting axis	1:120	1:120	1:90
Table Gyration angle/pulse		0.001°	0.001°	0.001°
Table Rotation speed (rpm) (Motor 3000 rpm)	Rotary axis	33.33	33.33	16.66
	Tilting axis	25	25	33.3
Load capacity (kgs)	Horizontal	100	100	200
	Vertical	65	65	100
Clamp Torque (Nm) Hydraulic 30 bar	Rotary axis	650	650	1100
	Tilting axis	750	750	1100
Clamp Torque ^ (Nm) Pneumatic 5 bar	Rotary axis	380	380	-
	Tilting axis	550	550	-
Driving Torque (Nm)		250	250	750
Indexing Accuracy* (Arc Sec)	Rotary axis	±15"	±15"	±15"
	Tilting axis	±30"	±30"	±30"
Repeatability (Arc Sec)		4"	4"	4"
Tilting angle (Degree)		-110 to + 110	-110 to + 110	-20 to + 110
Net Weight (kg) (approx)		290	210	350

* Higher Accuracy ± 5" on request

^ Also available with Higher Clamp Torque

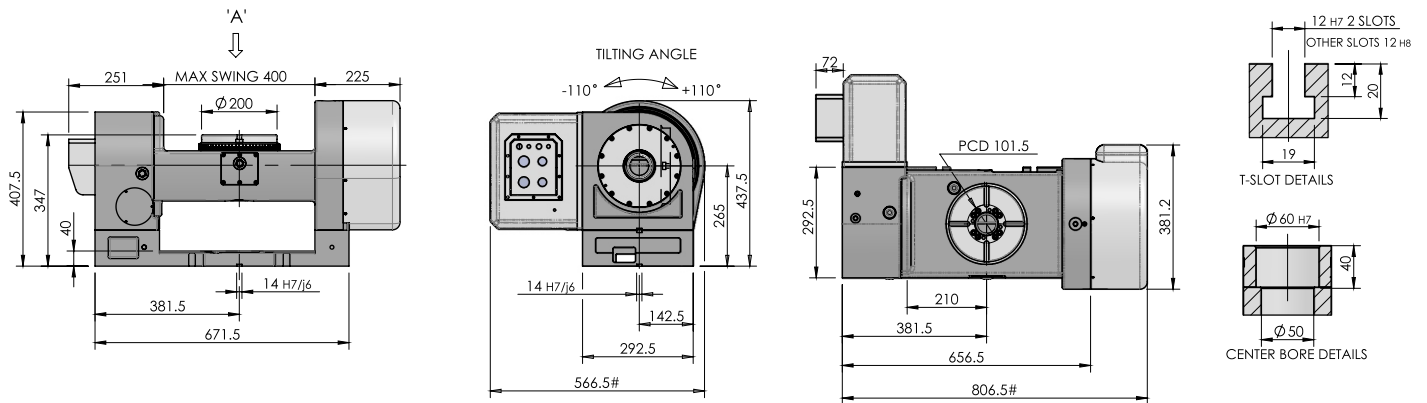
Check motor models on Page No. 72

Option available with pressurisation - Please contact us

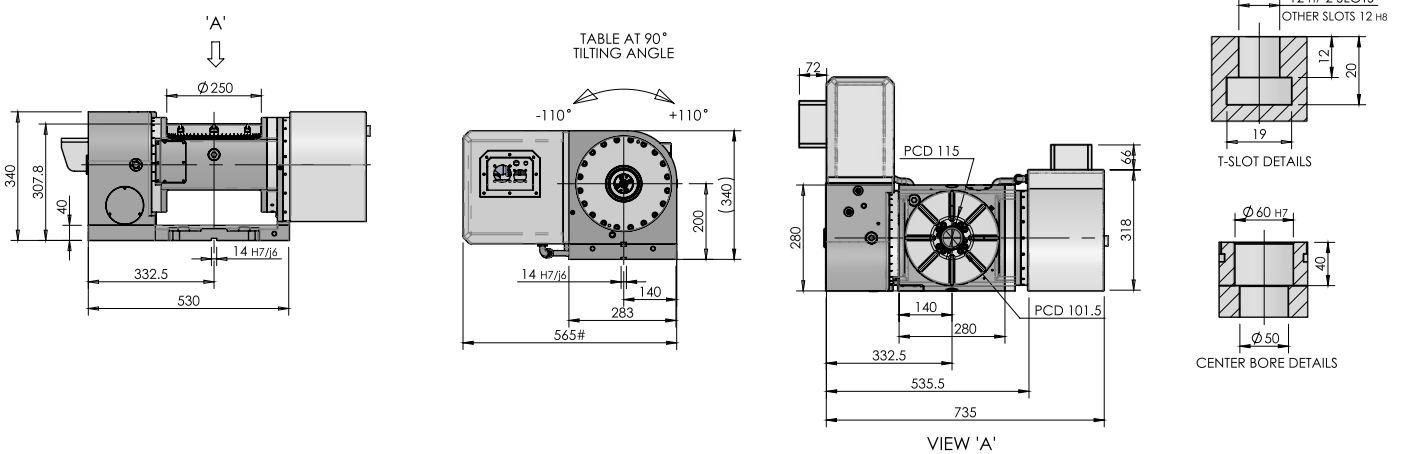
DIMENSIONAL DIAGRAMS



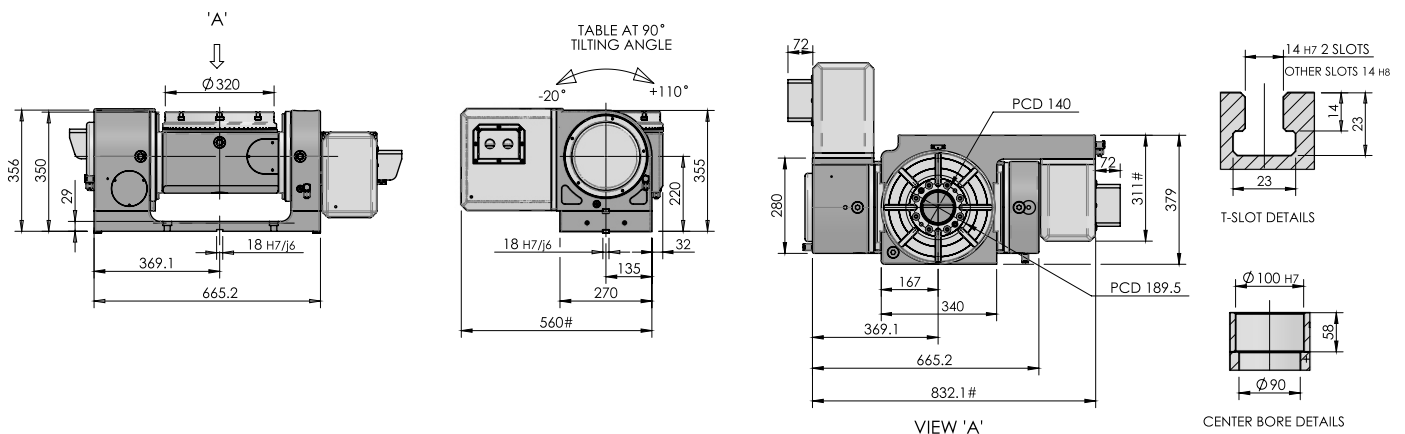
Model ULSR-201-TN (Large Swing Tilting Rotary Table)



Model USSR-251-TN

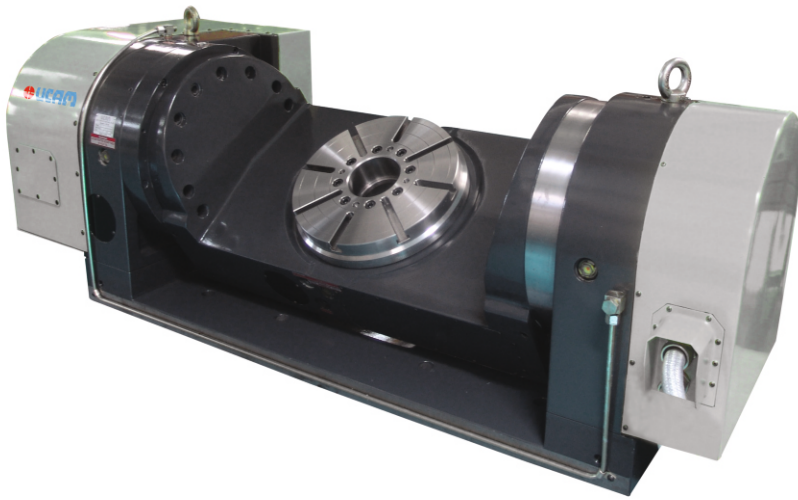


Model URH-320-TN



Dimension Marked as '#' is Dependent on Motor being used






CNC DEEPTILTING TABLE



Features:

- High Grade C I Construction
- Pre Loaded Axial Radial Roller Bearing
- Dual Lead worm Gear set
- Hydraulic Clamping
- Larger Swing Diameter

Specification

Model		URH-320i-DT-S	URH-320-DT-S	URH-500-DT-S	URH-630-DT-S
Turn Table diameter (mm)		ø320		ø500	ø630
Swing (mm)		400	700	550	1000
Center Bore diameter (H7) (mm)		ø60H7	ø100H7	ø100H7	ø100H7
T-Slot size (mm)	Ref slots (H7)	14H7x2	14x2	18x2	18x2
	Other slots (H8)	14H8x6	14x6	18x6	18x6
Tenon Slot size (H7) (mm)		18	18	18	18
Servo Motor Torque (Nm)*	Rotary axis	6	8	12	12
	Tilting axis	12	22	22	28
Speed Reduction ratio	Rotary axis	1:120	1:180	1:144	1:180
	Tilting axis	1:90	1:180	1:180	1:180
Table Gyration angle/pulse		0.001°	0.001°	0.001°	0.001°
Table Rotation speed (rpm) (Motor 3000 rpm)	Rotary axis	16.66	11.11	13.88	11.11
	Tilting axis	22.22	11.11	11.11	11.11
Load capacity (kgs)	Horizontal 	110	200	400	600
	Vertical 	70	200	400	600
Clamp Torque ^ (Nm) Hydraulic 30 bar	Rotary axis 	600	1500	2750	3500
	Tilting axis 	950	4000	5000	7000
Driving Torque (Nm)		400	800	1800	1800
Indexing Accuracy* (Arc Sec)	Rotary axis	±15"	±15"	±15"	±15"
	Tilting axis	±30"	±30"	±30"	±30"
Repeatability (Arc Sec)		4"	4"	4"	4"
Tilting angle (Degree)		-110 to +110		-110 to +110	-110 to +110
Net Weight (kg)(approx)		675	900	1300	3000

* Higher Accuracy ± 5" on request

^ Also available with Higher Clamp Torque

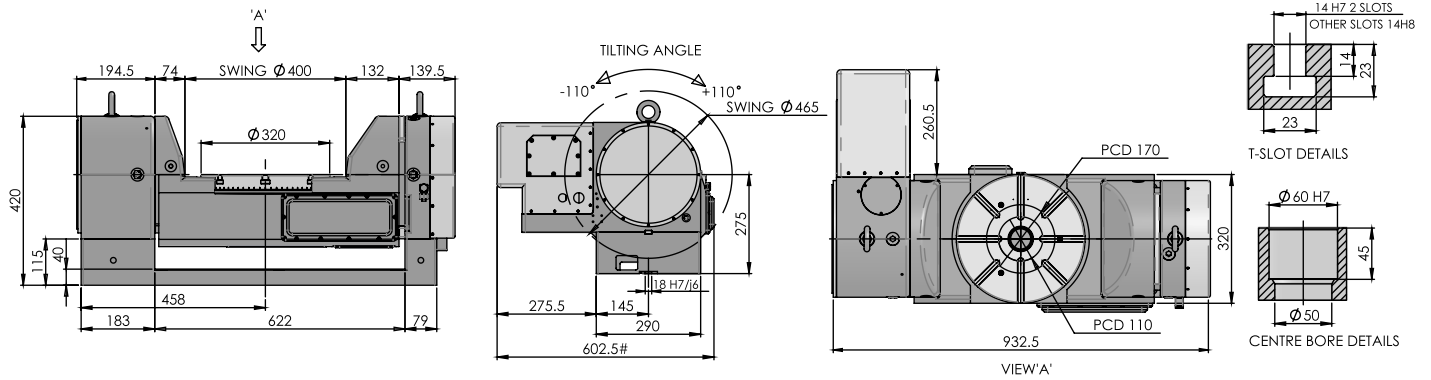
Check motor models on Page No. 72

Option available with pressurisation - Please contact us

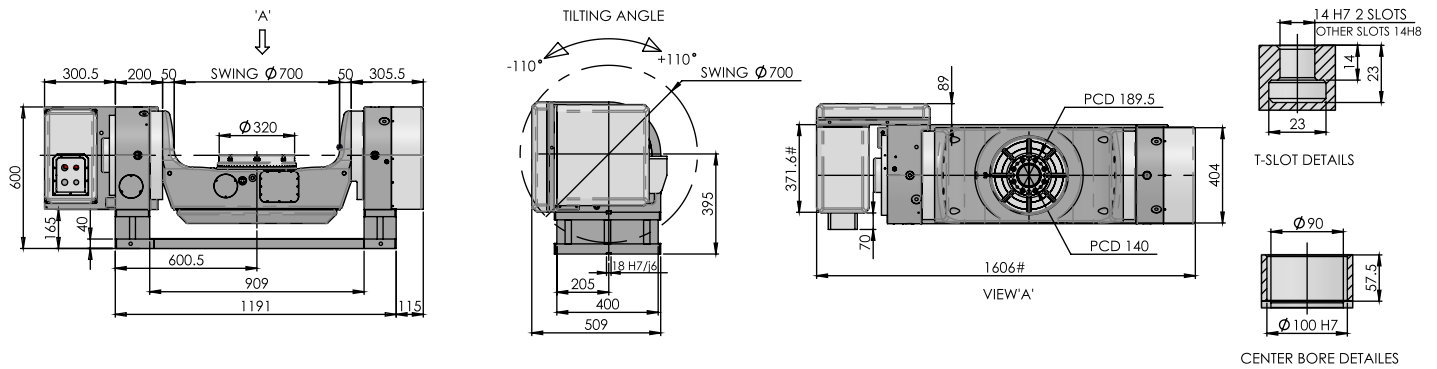
DIMENSIONAL DIAGRAMS



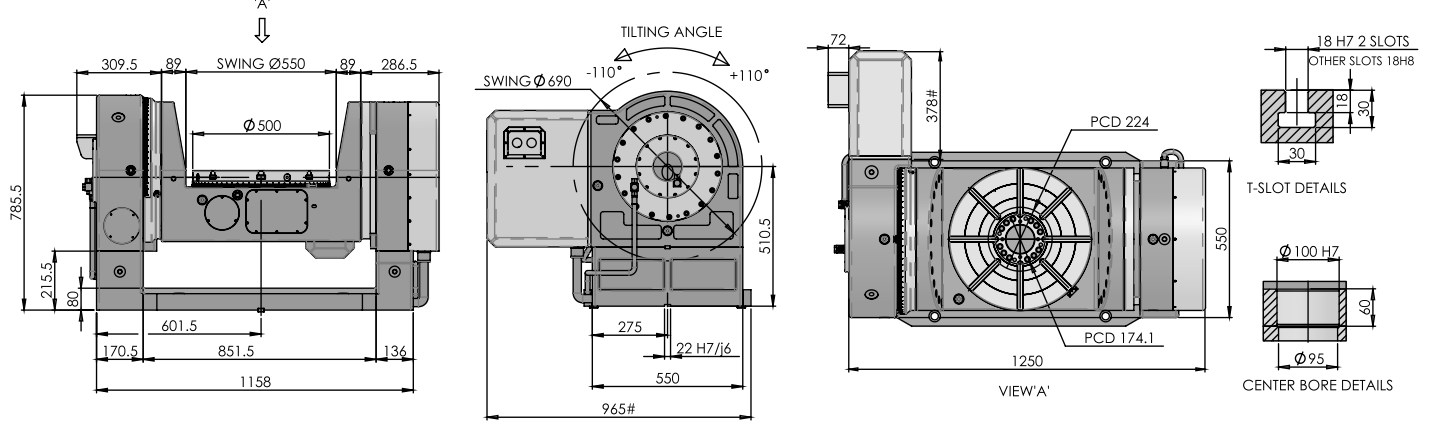
Model URH-320i-DT-S (Swing $\varnothing 400$) (Mint Tilting)



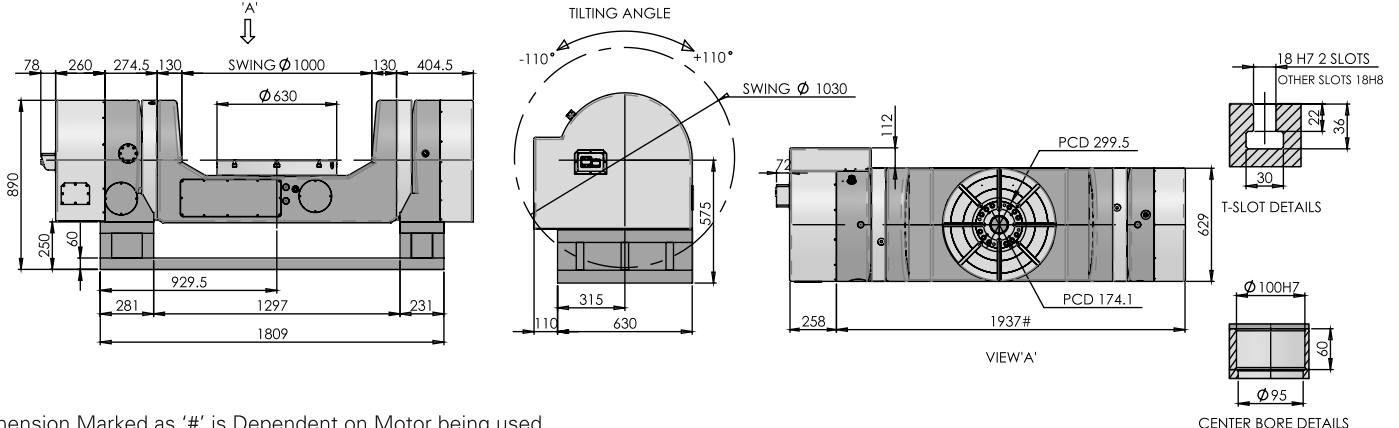
Model URH-320-DT-S (Swing $\varnothing 700$)



Model URH-500-DT-S (Swing $\varnothing 550$)



Model URH-630-DT-S (Swing $\varnothing 1000$)



Dimension Marked as '#' is Dependent on Motor being used



UCAM PVT. LTD.

Head Office:

A11/A12, 1st Stage, 1st Cross,
Peenya Industrial Area,
Bangalore - 560 058. INDIA.
Tel: +91 - 80 - 40744777,
Fax: +91 - 80 - 40744711
Email: sales@ucamind.com,
info@ucamind.com
www.ucamind.com

Factory:

Plot No. 297 & 298, 1st Stage,
Sompura KIADB Industrial Area,
Dobbaspeth, Sompura Hobli,
Nelamangala Taluk,
Bangalore Rural Dist – 562111. INDIA.



Hyfore Workholding Limited
Units 2 & 3, 67 Blackhorse Road,
Longford, Coventry, CV6 6DP

Tel: 024 7699 3153
Email: sales@hyfore.com
hyfore.com | hyfore.shop