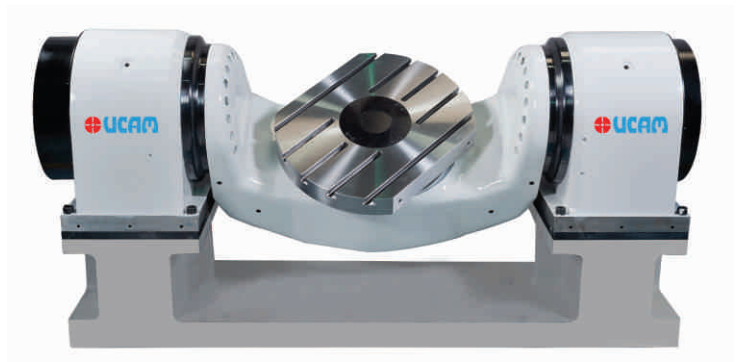
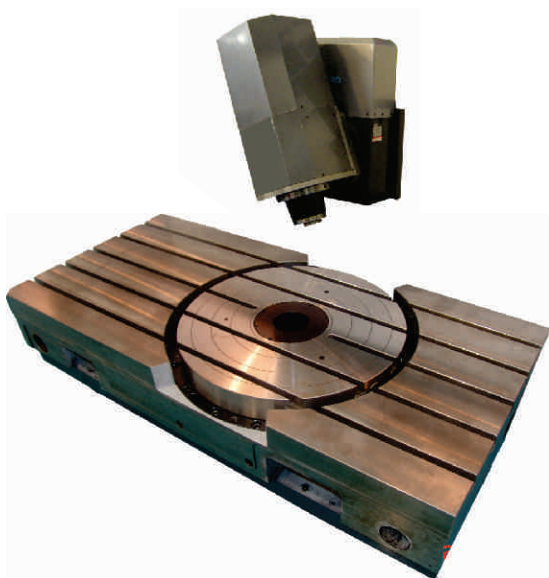
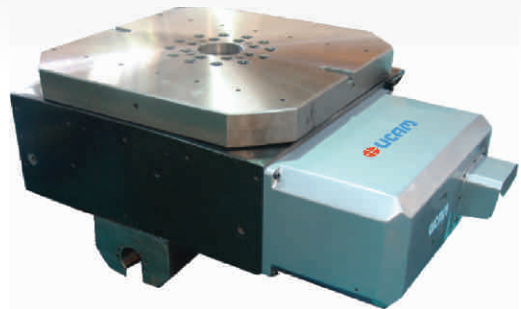


# Solutions for Machine Builders



# CONTINUOUS MILLING ROTARY TABLE



## Features:

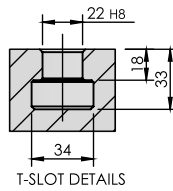
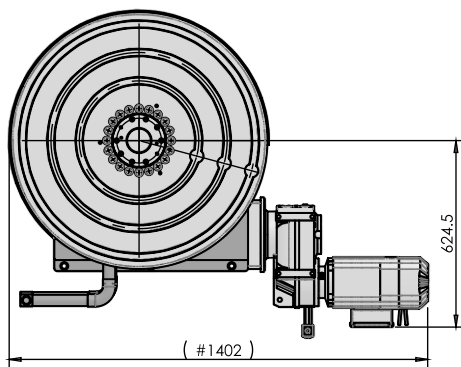
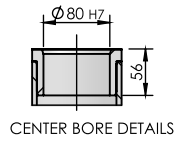
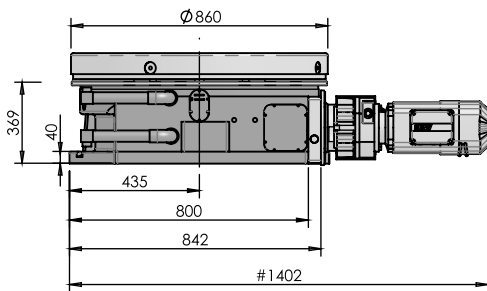
- High Grade C I Construction.
- Dual Lead Worm Gear Set.
- Horizontal mounting.
- High Driving Torque.

## Specification

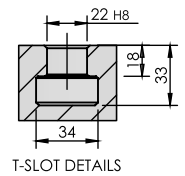
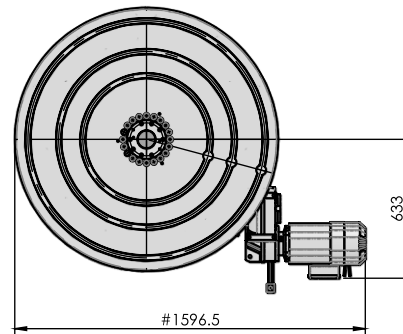
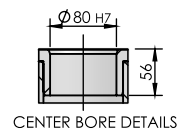
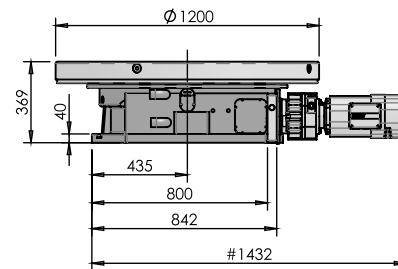
Model	URH-860-CT	URH-1200-CT	URH-1500-CT	URH-1700-CT
<b>Dimensional data</b>				
Turn Table size (mm)	ø860	ø1200	ø1500	ø1700
Center Bore diameter (H7) (mm)	ø80	ø80	ø100	ø100
Tenon Slot size (H7) (mm)	18	18	22	22
T- slot size ( Radial slots ) - slot width x numbers (H9) (mm)	18x3	18x3	22x3	22x3
<b>Operational data</b>				
Rated power (Kw)	2.2	3	4	3
Table rotation speed (rpm)	0.8226	0.8252	0.4913	0.5739
<b>Load and force data</b>				
Load carrying capacity Horizontal (kg)	3500	4500	7000	8000
Driving torque (Nm)	12000	15000	14000	22500
<b>Accuracies</b>				
Indexing Accuracy (Arc sec.)	±15"	±15"	±15"	±15"
Repeatability (Arc sec.)	4"	4"	4"	4"
Table top flatness (mm)	0.020	0.025	0.025	0.03
Table top runout (mm)	0.025	0.03	0.03	0.03
Parallelism of table top base (Horizontal position) (mm)	0.03	0.04	0.04	0.04
Center bore run out (mm)	0.01	0.015	0.015	0.015
<b>Overall weight</b>				
Net weight (Approx) (kg)	1900	2100	3000	3500



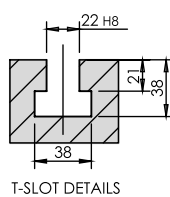
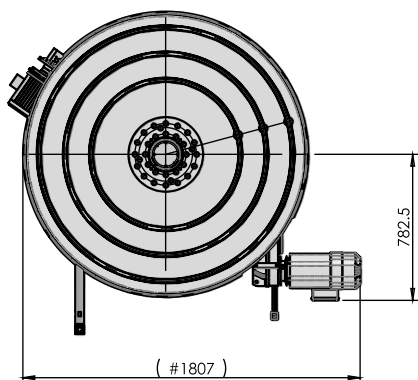
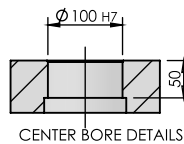
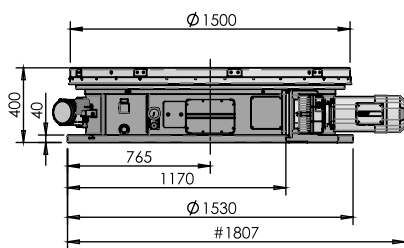
### URH-860-CT



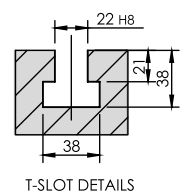
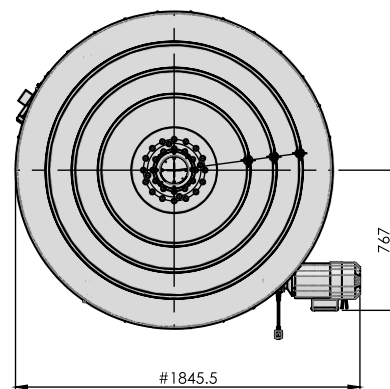
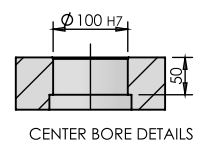
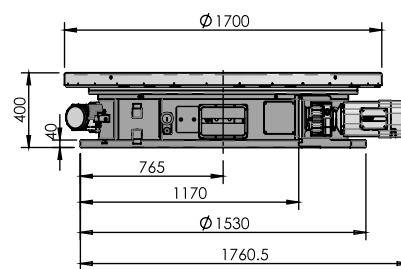
### URH-1200-CT



### URH-1500-CT



### URH-1700-CT



# ROTARY TABLES FOR HMC



## Specification

Model	UHR-400-H	UHR-500-H
Table Gyration angle/pulse <sup>#</sup>	0.001°	0.001°
Turn Table Size (mm)	ø400 / □400	ø500 / □500
Type of Mounting	Fixed/Moving	Fixed/Moving
Servo Motor Torque (Nm)	12	12
Speed Reduction ratio	90	144
Table Rotation speed (Motor at 2000 rpm)	22.22	13.88
Clamp Torque (Nm) Hydraulic	2000 @ 25 bar	2800 @ 20 bar
Load capacity (kg)	800	900
Tilting moment (Nm)	3500	6000
Max.Torque capacity of worm gear (Nm)	800	1000
Indexing Accuracy (Arc Sec)*	±15"	±15"
Repeatability	4"	4"
Net Weight (kg) (approx)	400	800
Table top flatness Per overall length 0.01 (mm)	0.015	0.015
Center bore run out (mm)	0.015	0.015
Table top to run out (mm)	0.02	0.02
Parallelism of table top to base (Horizontal position)(mm)	0.02	0.02

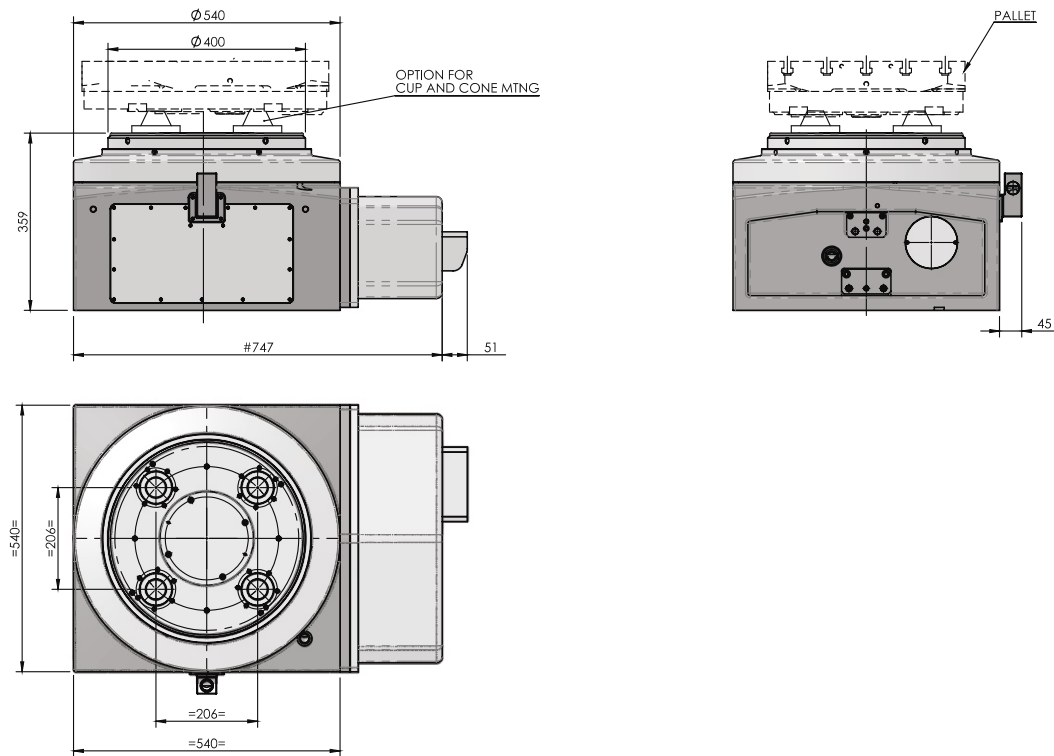
\* Higher accuracy ±5" available on request

# Also available in 1° indexing, 2 - piece coupling design

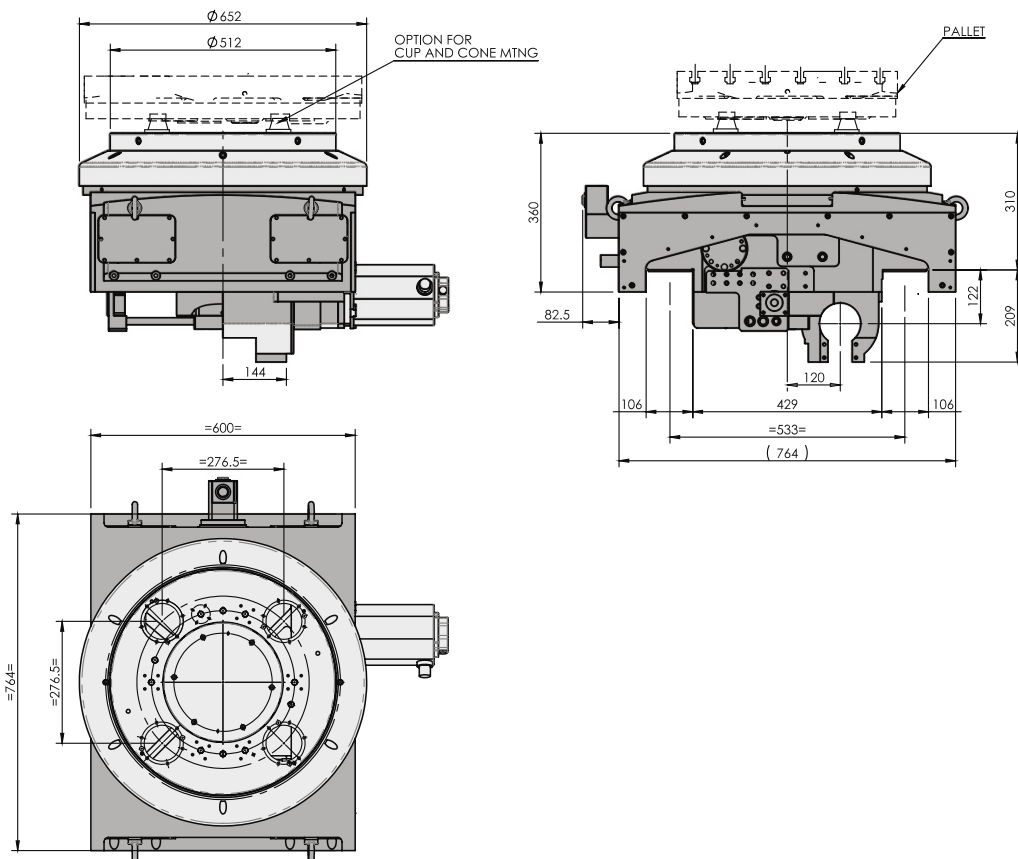




## UHR-400-H-PC (Fixed Type)



## UHR-500-H-PC (Moving Type)



# ROTARY TABLES FOR HMC



## Specification

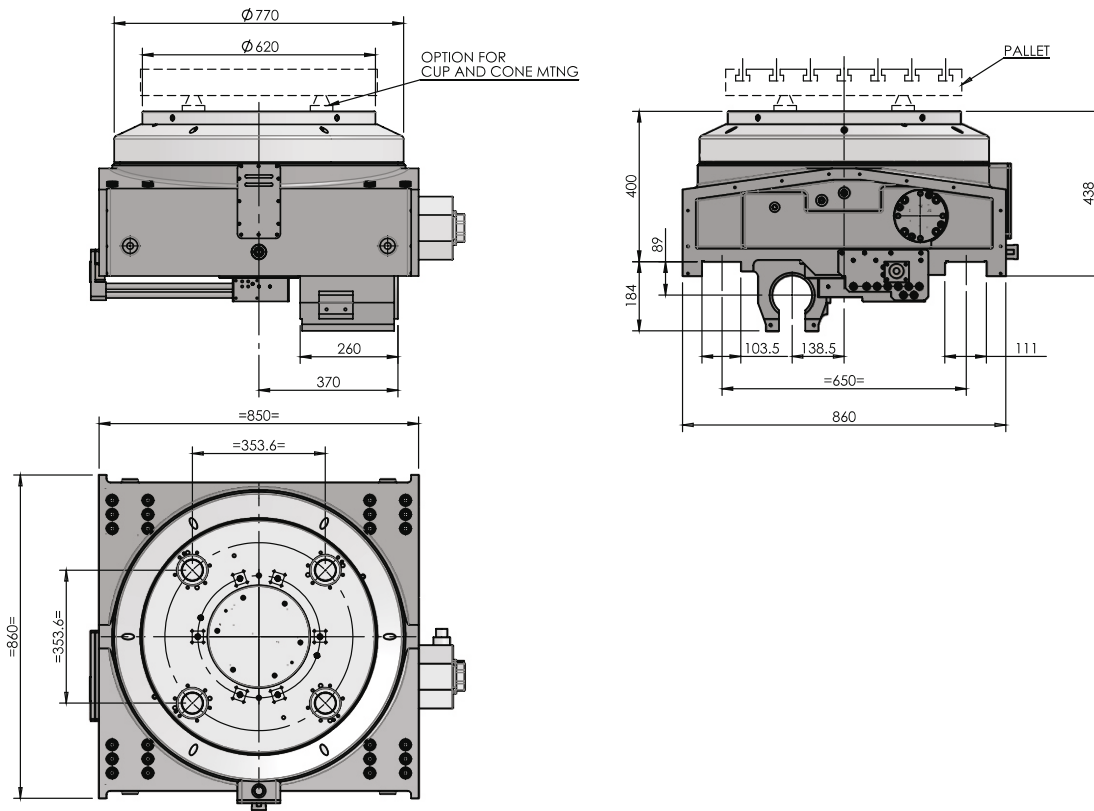
Model	UHR-630-H	UHR-800-H
Table Gyration angle/pulse <sup>#</sup>	0.001°	0.001°
Turn Table Size (mm)	ø630 / □630	ø800 / □800
Type of Mounting	Fixed/Moving	Fixed/Moving
Servo Motor Torque (Nm)	16	22
Speed Reduction ratio	1:180	1:180
Table Rotation speed (Motor 2000 rpm)	11.11	11.11
Clamp Torque (Nm) Hydraulic 25 Bar	7000	12000
Load capacity (kg)	2200	3000
Tilting moment (Nm)	9000	12000
Max.Torque capacity of worm gear (Nm)	2500	4000
Indexing Accuracy (Arc Sec)	±15"	±15"
Repeatability	4"	4"
Net Weight (kg) (approx)	1500	2100
Table top flatness Per overall length 0.01 (mm)	0.015	0.015
Center bore run out (mm)	0.015	0.015
Table top to run out (mm)	0.02	0.02
Parallelism of table top to base (Horizontal position)(mm)	0.02	0.02

\* Higher accuracy ±5" available on request

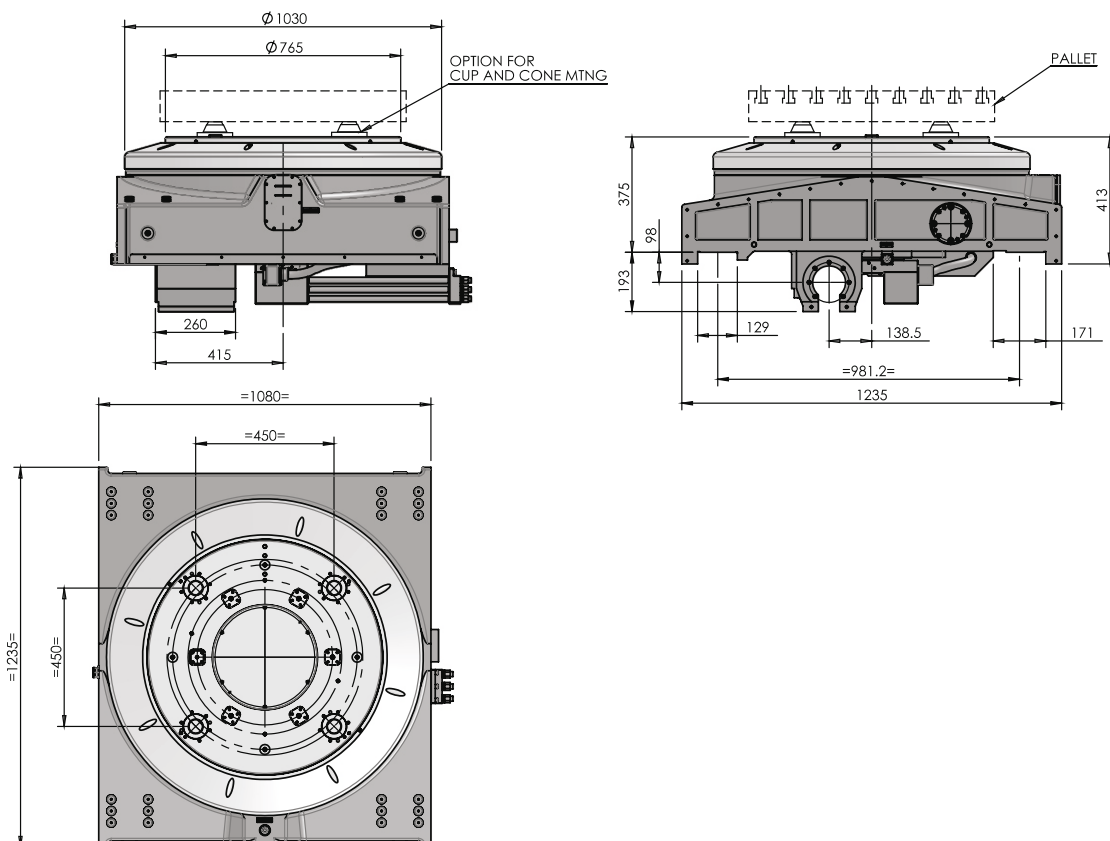
# Also available in 1° indexing, 2 - piece coupling design



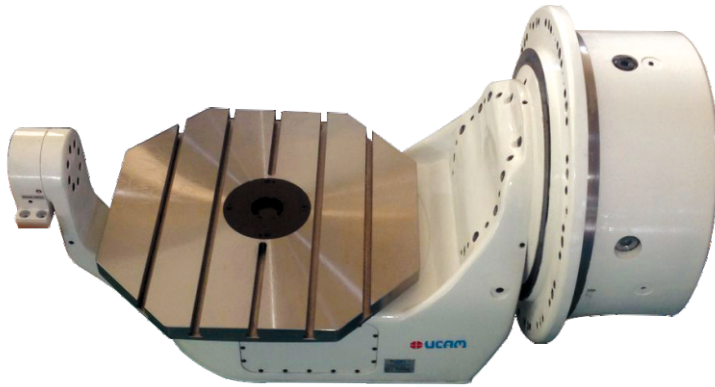
## UHR-630-H-PC (Moving Type)



## UHR-800-H-PC (Moving Type)



# CANTILEVERTABLE



## Features:

- Dual lead worm gear drive
- Hydraulic clamping
- Option with direct measuring encoder

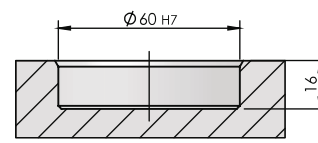
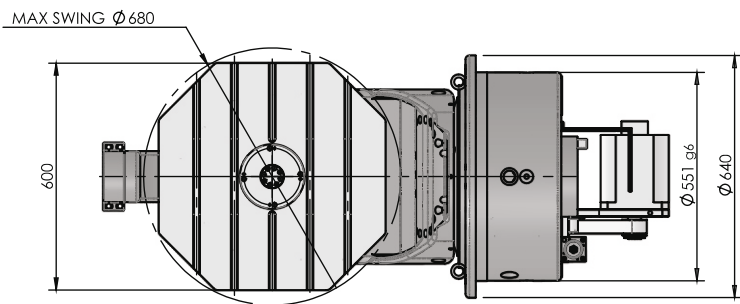
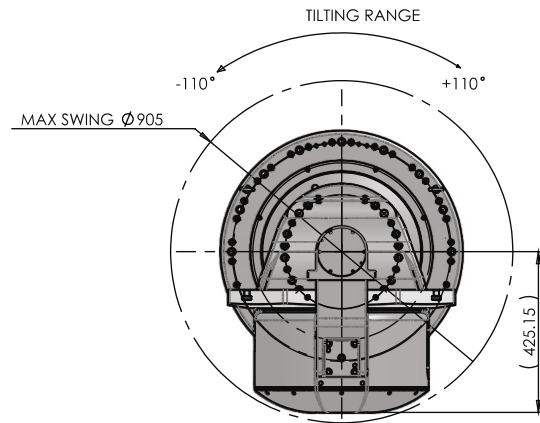
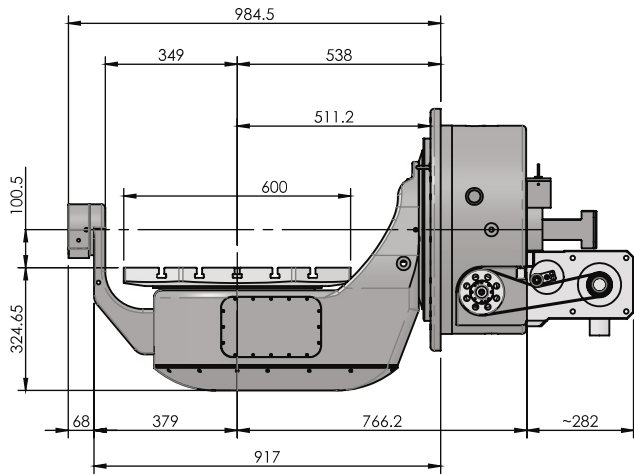
## Specification

Model		URH-SQ600i-ST
<b>Dimensional data</b>		
Turn Table size (mm)		Sq600
T - Slots size	Reference slot width (mm)	14H7
	other slots width (mm)	14H8
	T-slot pitch (mm)	100
Center bore diameter		Ø60H7
Rotary axis swing		Ø680
Tilting range		±110°
Table gyration angle / pulse		0.001°
<b>Operational data</b>		
Speed reduction ratio	Swivel axis	1:120
	Rotary axis	1:120
Table rotation speed (Motor 3000Rpm)	Swivel axis	25
	Rotary axis	25
<b>Load and force data</b>		
Safe load with support (max) Kg)		250
Servo motor torque (Nm)	Swivel axis	22
	Rotary axis	9
Clamp Torque (Hyd @ 70 bar)	Swivel axis	4000
	Rotary axis	2500
Driving Torque	Swivel axis	1400
	Rotary axis	900
<b>Accuracies</b>		
Table top flatness (mm)		0.01
Table top surface run out (mm)		0.015
Center bore run out (mm)		0.01
Indexing Accuracy* (sec.)	Swivel axis	±30
	Rotary axis	±15

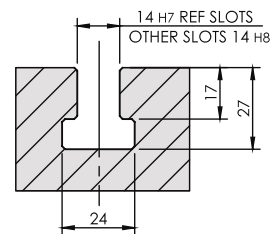
\* Higher accuracy of ±15" for Swivel axis and ±7.5" for Rotary axis available on request



## URH-SQ600i-ST

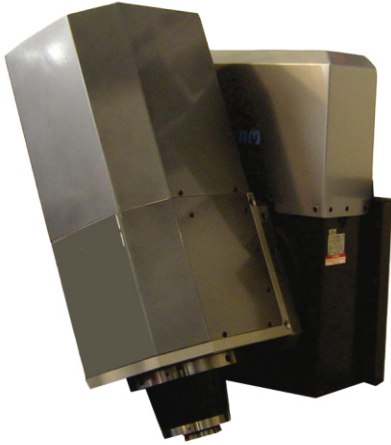


CENTER BORE DETAILS



T-SLOT DETAILS

# SPINDLE TILTING HEAD



## Features:

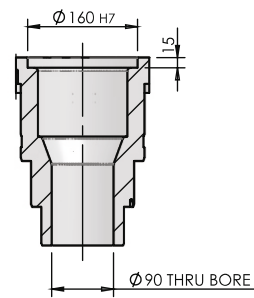
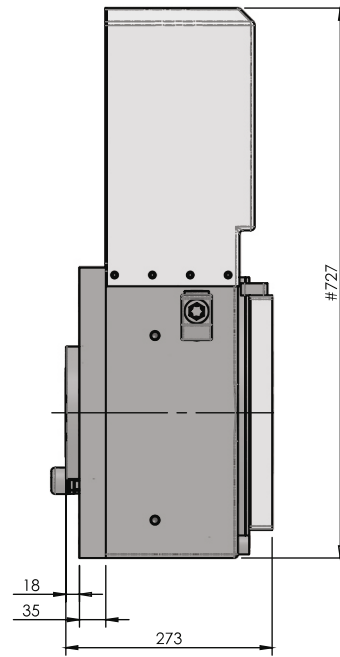
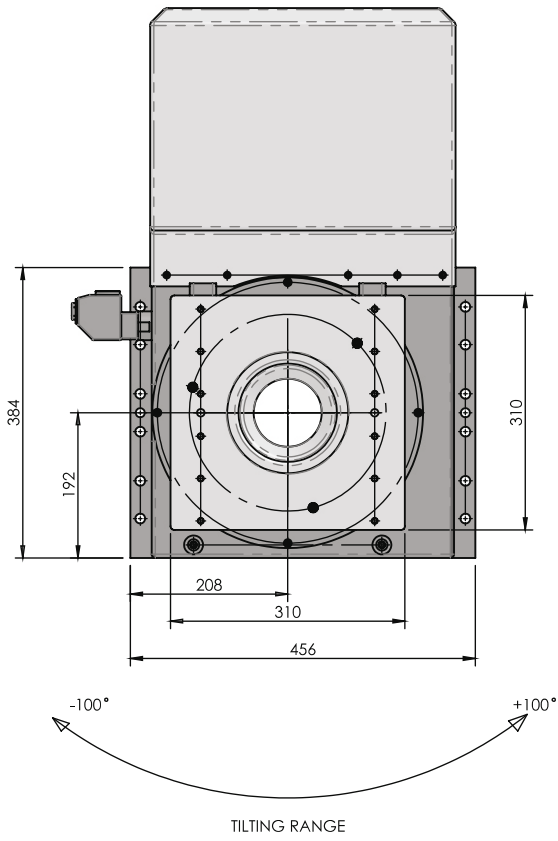
- Integrated Cable Management System
- Spindle Housing as Option

## Specification

Model	USTR-310-SQ-S2
Tilting range	+/-100°
Speed reduction ratio	1:90
Tilting Head Rotation speed @ motor rpm 3000	33.33
Thru bore diameter (mm)	Ø90
Tilting moment Nm	4500
Clamping Torque-Hydraulic @ 35Bar (Nm)	3000
Worm gear Torque (Nm)	1500
Servo Motor Torque (Nm)	22
Indexing Accuracy (with high resolution ring encoder) (sec)	± 7.5"
Indexing Accuracy(without encoder) (Arc sec)	± 15"
Repeatability (Arc sec)	4"
Spindle power kW	30/25/16
Spindle taper	BT 40/SK 40
Spindle rpm	10000/18000/24000
Approximate weight(without electro spindle) (kg)	300



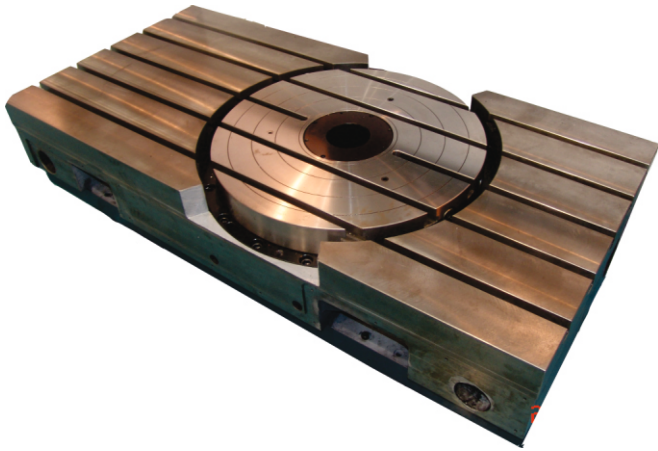
USTR-310-SQ-S2



CENTER BORE DETAILS



# ROTARY TABLE INSIDE MACHINE TABLE



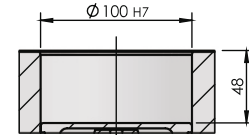
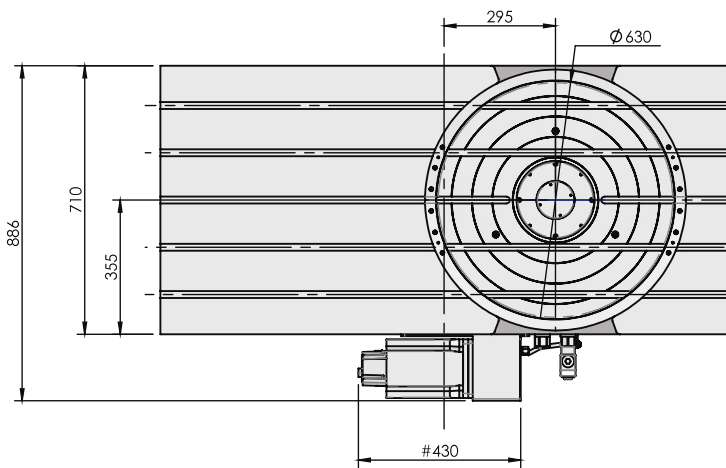
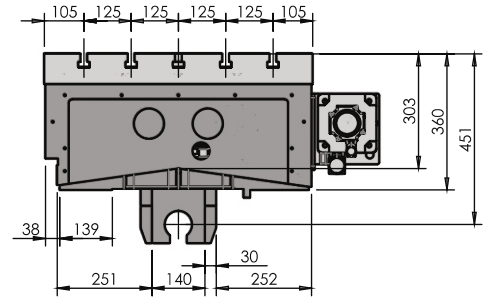
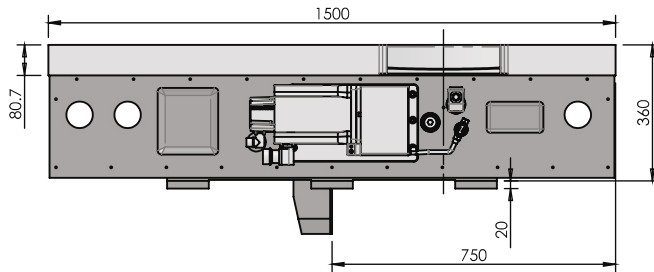
## Features:

- Rotary Table built into machine bed
- Type of mounting: Fixing/Moving
- Option available with Direct Drive Rotary Table

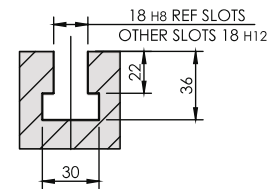
Specification		
Model	UTTR-630-Hi	
<b>Dimensional data</b>		
Turn Table diameter (mm)	Ø630	
Center bore diameter (H7) (mm)	Ø100H7	
T - Slot	Nos	5
	Reference slots(H7) (mm)	18H7
	Fixing slots(H8) (mm)	18H11
Type of mounting	Moving	
<b>Operational data</b>		
Servo Motor torque (Nm)	12	
Speed reduction ratio	1:120	
Table gyration angle / pulse	0.001°	
Table rotation speed (Motor 3000rpm)	25	
<b>Load and force data</b>		
Load capacity Horizontal (kg)	1300	
Tilting moment (kg)	20,000	
Clamp torque Hydraulic @ 55 Bar Nm	4500	
Driving torque Nm	1800	
<b>Accuracies</b>		
Indexing Accuracy (with high resolution encoder) (Arc/sec.)	+/- 5"	
Repeatability	4"	
Net weight (approx) (kg)	1450	



## UTTR-630-Hi

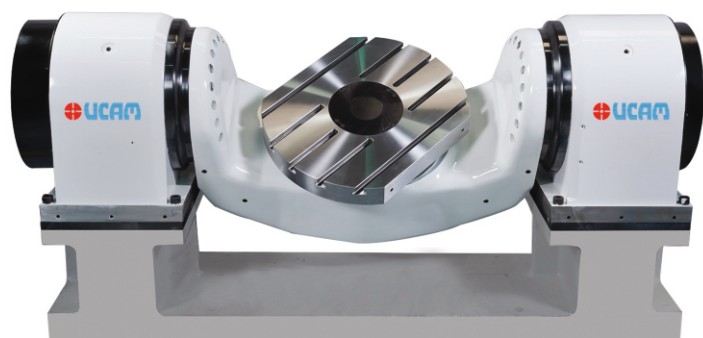


CENTER BORE DETAILS



T-SLOT DETAILS

# DIRECT DRIVE TILTING ROTARY TABLE



## Features:

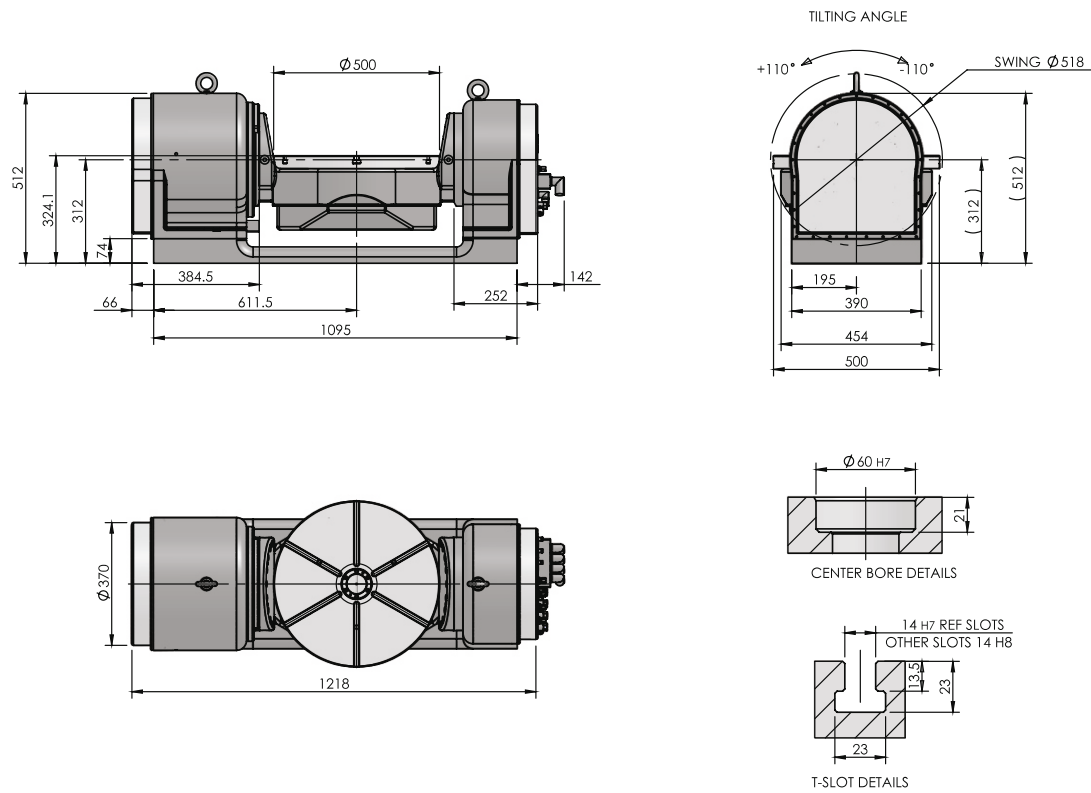
- Dynamic response
- Torque motor driven
- Compact in design

## Specification

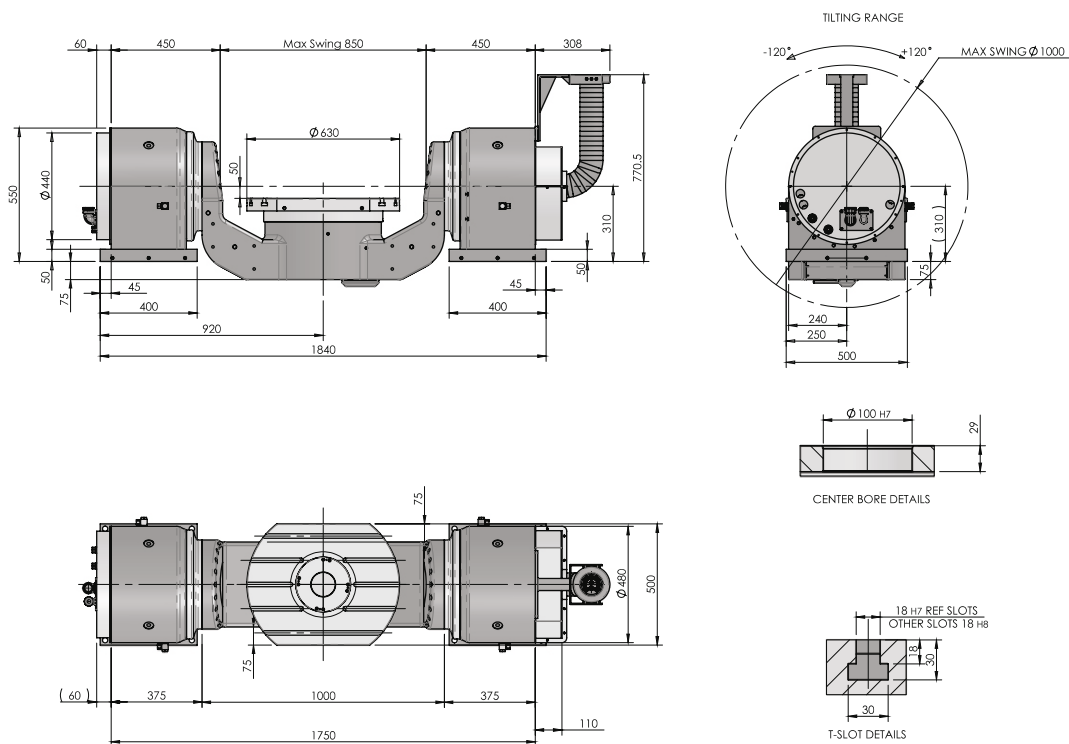
Model		UDDR-500-TN-S-500	UDDR-600-TN-S-850
<b>ROTARY AXIS</b>			
<b>Dimensional data</b>			
Turn Table diameter (mm)		Ø500	Ø600
T - Slot	Reference slots (mm)	14H7	18H7
	Other slots (mm)	14H8	18H8
Total number of slots		6	5
<b>Operational data</b>			
Continuous torque (Nm @ rpm)		231 @ 120	360 @ 50
Peak torque @ rpm (Nm @ rpm)		427 @ 120	930 @ 50
Table maximum rpm		400	50
<b>Load and force data</b>			
Clamping Torque Hyd (Nm)		1300	2500
Maximum Clamping pressure (bar)		50	30
Safety Clamp Torque (Nm)		350	1100
<b>Accuracies</b>			
Indexing Accuracy (Arc/sec.)		±6"	±5"
<b>Chiller specifications</b>			
Chiller flow (lpm)		6.3	15
Pressure (bar)		1	1
Maximum continuous power dissipation (W)		2.3	
Chiller Media		70%Water + 30% Glycol	70%Water + 30% Glycol
<b>TILT AXIS</b>			
<b>Dimensional data</b>			
Continuous torque @ rpm (Nm @ rpm)		685 @ 60	1820 @ 30
Peak torque @ rpm (Nm @ rpm)		1235 @ 60	3186 @ 30
Table maximum rpm		150	30
<b>Load and force data</b>			
Clamping Torque Hydraulic (Nm)		2750	5000
Maximum Clamping pressure (bar)		60	55
Safety Clamp Torque (Nm)		600	2200
<b>Accuracies</b>			
Indexing Accuracy (Arc/sec.)		±5"	±7.5"
Net weight of the Tilting Table (kg)		750	1460 (without base)



## UDDR-500-TN-S-500



## UDDR-600-TN-S-850





## UCAM PVT. LTD.

### Head Office:

A11/A12, 1st Stage, 1st Cross,  
Peenya Industrial Area,  
Bangalore - 560 058. INDIA.  
Tel: +91 - 80 - 40744777,  
Fax: +91 - 80 - 40744711  
Email: sales@ucamind.com,  
info@ucamind.com  
www.ucamind.com

### Factory:

Plot No. 297 & 298, 1st Stage,  
Sompura KIADB Industrial Area,  
Dobbaspeta, Sompura Hobli,  
Nelamangala Taluk,  
Bangalore Rural Dist – 562111. INDIA.



**Hyfore Workholding Limited**  
Units 2 & 3, 67 Blackhorse Road,  
Longford, Coventry, CV6 6DP

Tel: 024 7699 3153  
Email: sales@hyfore.com  
hyfore.com | hyfore.shop