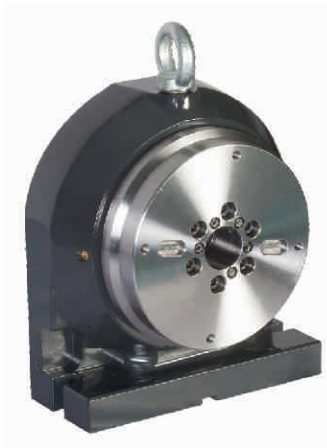
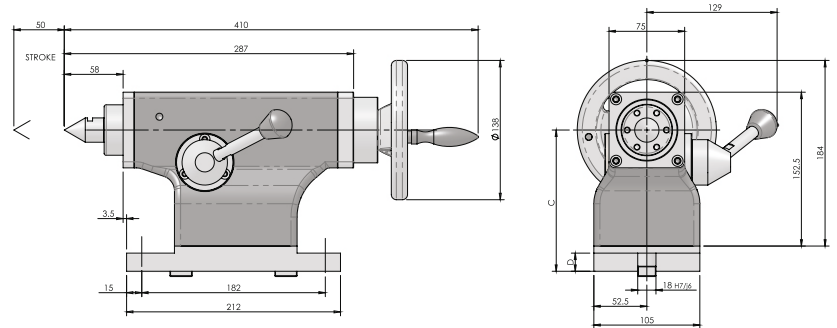


Accessories



ACCESSORIES

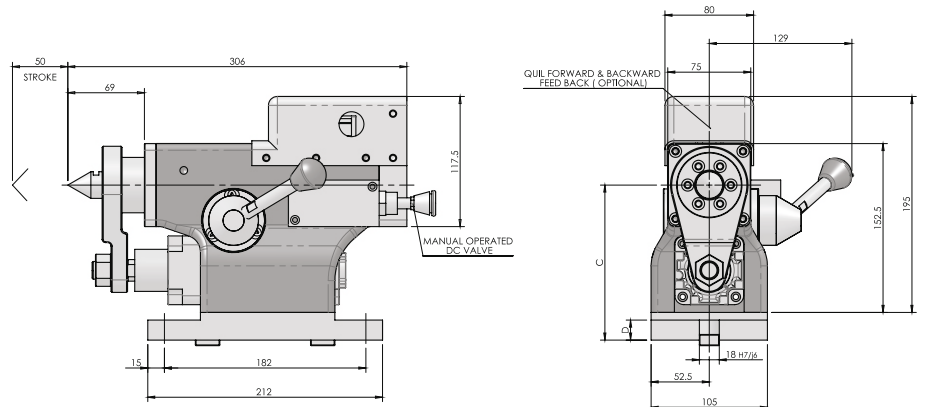
Manual Tailstock



Dimensional Data

Model	Suitable Rotary Table	C	D	Dead Center	Stroke	Net Weight (Kgs) (approx)
UTAIL -135-Mi	URH-170 / URH-180	135	13	MT# 3	50	16
UTAIL -140-Mi	URH-201 / URX-200	140	18	MT# 3	50	19
UTAIL -160-Mi	URH-251 / URX-250	160	18	MT# 3	50	22
UTAIL -200-Mi	URH-200-TN / USSR-201	200	18	MT# 3	50	25
UTAIL -210-Mi	URH-321 / URX-320	210	18	MT# 3	50	26
UTAIL -220-Mi	URH-320-TN	220	18	MT# 3	50	27
UTAIL -230-Mi	URH-401	230	18	MT# 3	50	28

Pneumatic Tailstock

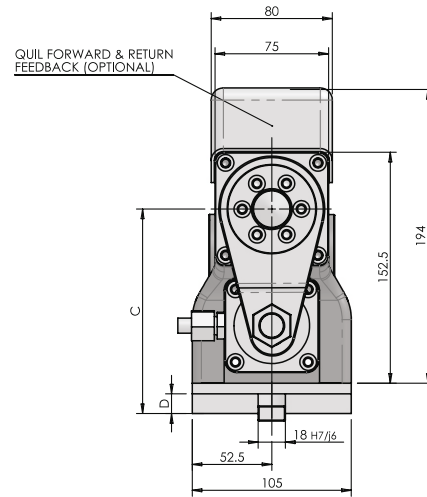
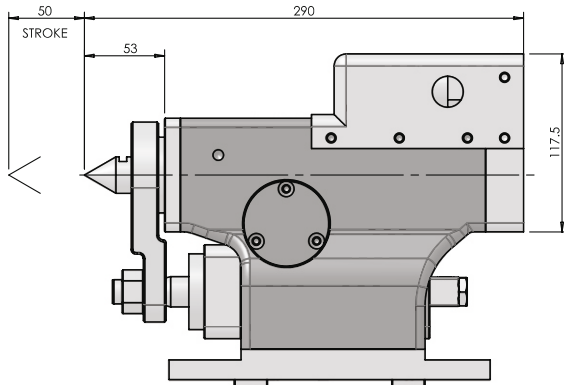
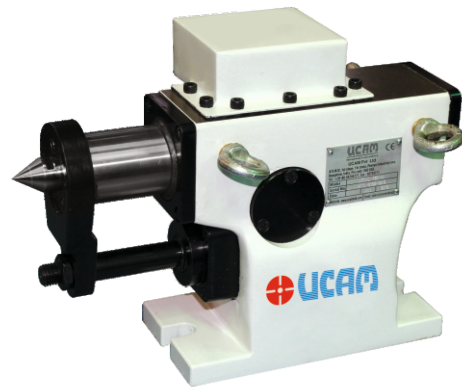
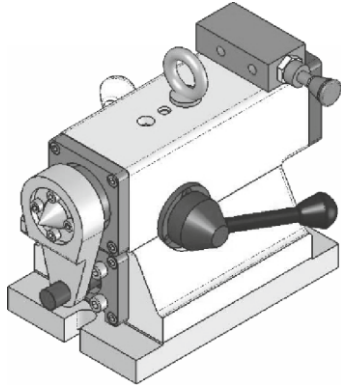


Dimensional Data

Model	For Rotary Table	C	D	Dead Center	Stroke	Axial Thrust Pneu @ 5 Bar	Net Weight (Kgs) (approx)
UTAIL -135-Pi	URH-170 / URH-180	135	13	MT# 3	50	1000N	18
UTAIL -140-Pi	URH-201 / URX-200	140	18	MT# 3	50	1000N	21
UTAIL -160-Pi	URH-251 / URX-250	160	18	MT# 3	50	1000N	24
UTAIL -200-Pi	URH-200-TN / USSR-201	200	18	MT# 3	50	1000N	27
UTAIL -210-Pi	URH-321 / URX-320	210	18	MT# 3	50	1000N	28
UTAIL -220-Pi	URH-320-TN	220	18	MT# 3	50	1000N	29
UTAIL -230-Pi	URH-401	230	18	MT# 3	50	1000N	30



Hydraulic Tailstock



Dimensional Data

Model	For Rotary Table	C	D	Dead Center	Stroke	Axial Thrust Pneu @ 30 Bar	Net Weight (Kgs) (approx)
UTAIL -135-Hi	URH-170 / URH-180	135	13	MT# 3	50	3750N	18
UTAIL -140-Hi	URH-201 / URX-200	140	18	MT# 3	50	3750N	21
UTAIL -160-Hi	URH-251 / URX-250	160	18	MT# 3	50	3750N	24
UTAIL -200-Hi	URH-200-TN / USSR-201	200	18	MT# 3	50	3750N	27
UTAIL -210-Hi	URH-321 / URX-320	210	18	MT# 3	50	3750N	28
UTAIL -220-Hi	URH-320-TN	220	18	MT# 3	50	3750N	29
UTAIL -230-Hi	URH-401	230	18	MT# 3	50	3750N	30

Revolving Centers for Tailstocks (optional)

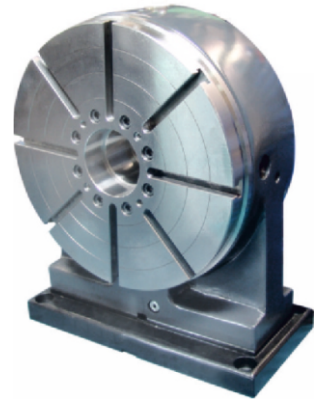
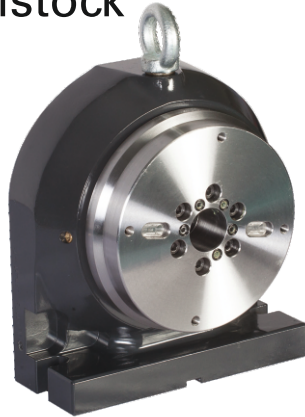


Standard Option

Non Standard Option

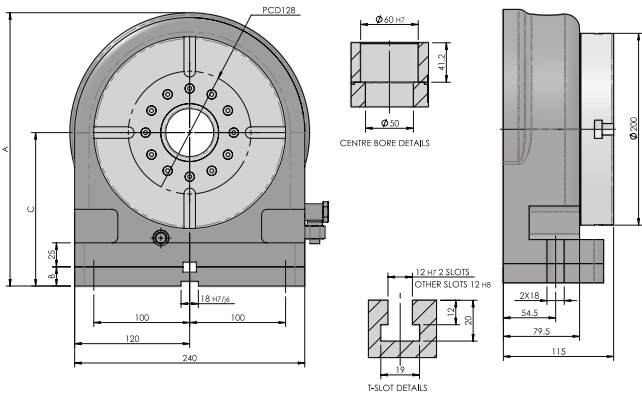
ACCESSORIES

Face Plate Tailstock

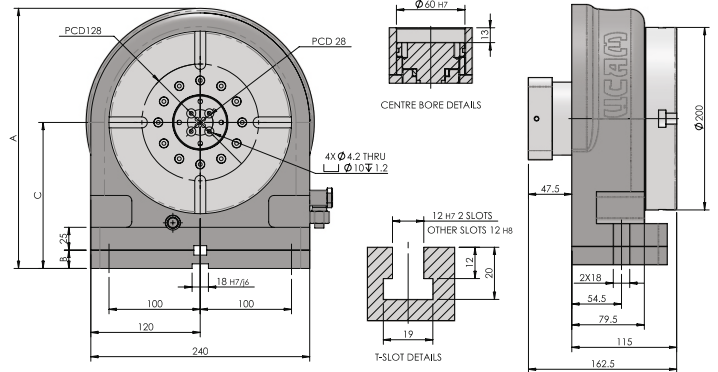


Face Plate Tailstock with 4 line Rotary Union (option 5 line)

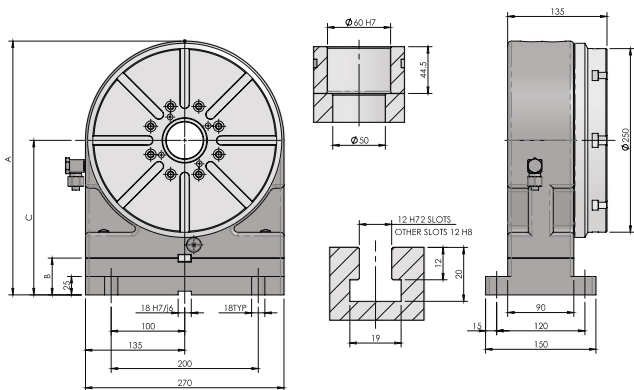
UFT-140/160



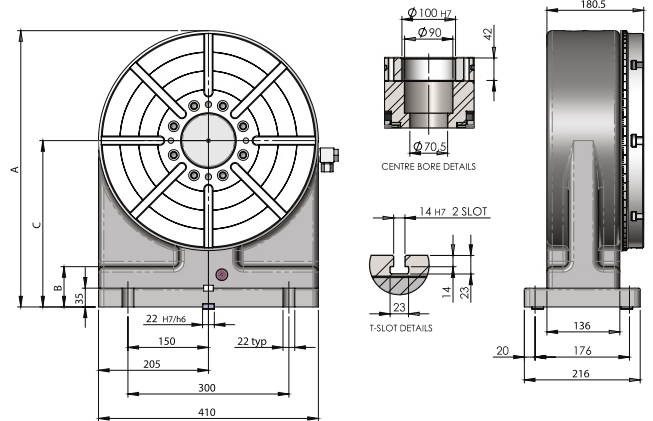
UFT-140/160-RU



UFT-210/230



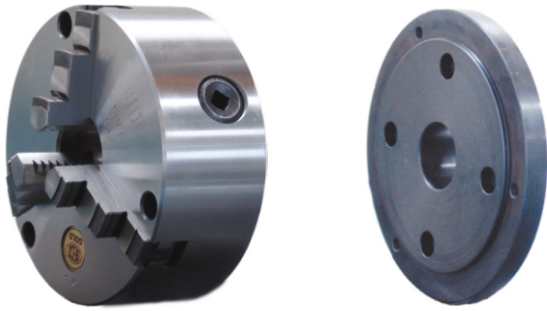
UFT-310/325



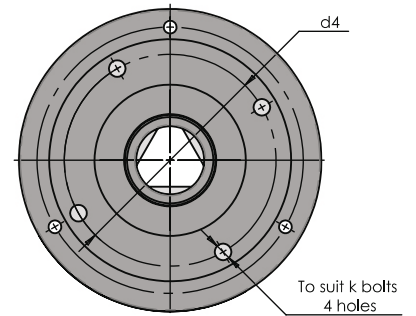
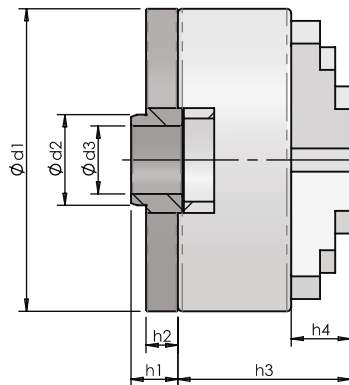
Dimensional Data

Model	For Rotary Table	A	B	C	Clamp Torque		Weight
					Pneu@5bar	Hyd@30bar	
UFT-140i	URH-201/URX-200	265	0	140	200Nm	500Nm	30
UFT-160i	URH-251/URX-250	285	20	160	200Nm	500Nm	32
UFT-210-H	URH-321/URX-320	295	50	210	NA	600Nm	65
UFT-230-H	URH-401	315	70	230	NA	600Nm	70
UFT-310-H	URH-500	480	75	310	NA	2000Nm	190
UFT-325-H	URH-631	495	90	325	NA	2000Nm	205

NA: Not Applicable



Manual Scroll Chuck

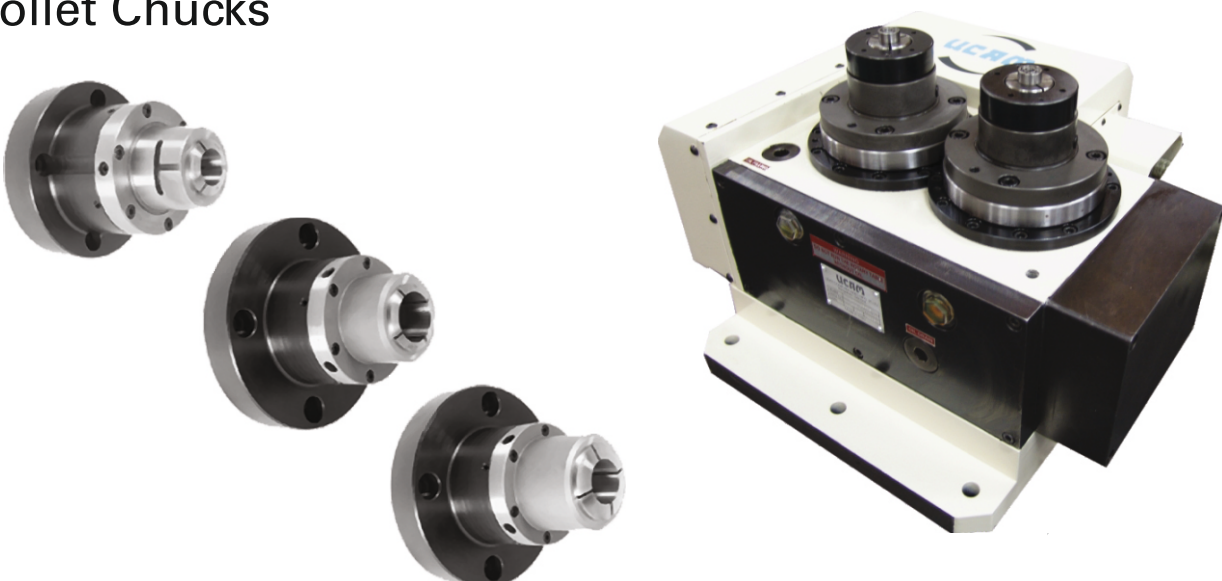


Dimensional Data

Applicable NCRT model	d1	d2	d3	d4 (pcd)	hi	h2	h3	h4	k
URH-170 / URH-180	160	40h6	-	140 ±0.2	26	16	96	29	M10
URH-201 / URH-200	200	60 h6	45H7	176 ±0.2	31	21	106	31	M10
URH-251 / URH-250	250	60 h6	40H7	224 ±0.2	36	26	121	36	M10
URH-321 / URH-320	320	100 h6	80H7	286 ±0.2	39	24	123	36	M12

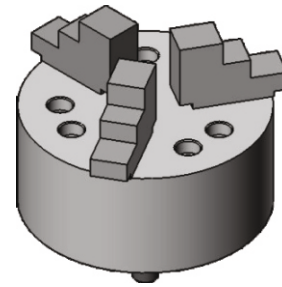
Chuck runout: 0.04mm
 * Fine Adjustable Chucks available for finer runout

Collet Chucks

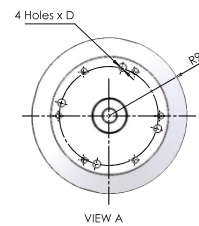
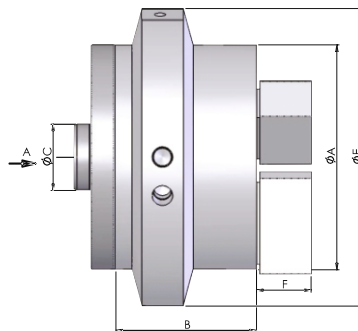
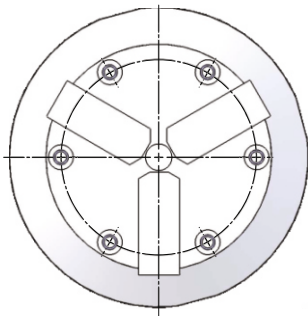


Sizes based on requirement

ACCESSORIES



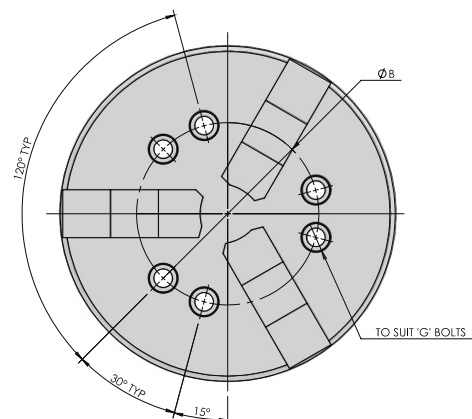
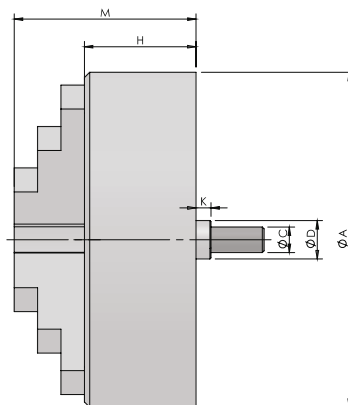
Rotary Air Chuck



Dimensional Data

Application	A	B	C	D	E	F	Gripping Force
Rotary Table Model							(N)
URH-150	136	85	40	M8	180	33	9000
URH-170 / URH-180	166	93	40	M10	210	40	16000
URH-201 / URX-200	215	112	60	M10	250	42	26000
URH-251 / URX-250	255	120	60	M10	290	46	38000

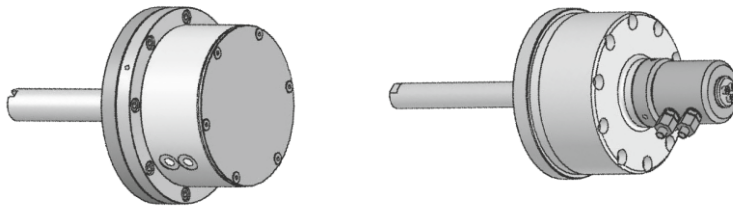
Hydraulic Power Chuck



Dimensional Data

Applicable NCRT model	A	B (PCD)	C	D	G	H	K	M	Gripping Force (N)
URH-170 / URH-180	160	104.8	M16	32	M10	75	20	114	37000
URH-201 / URX-200	200	133.4	M20	36	M12	90	20	148	58000
URH-251 / URX-250	250	133.4/171.4	M20	36	M12/M16	97	20	155	79000
URH-321 / URX-320	315	171.4/235	M20	36	M16/M18	105	20	171	107000

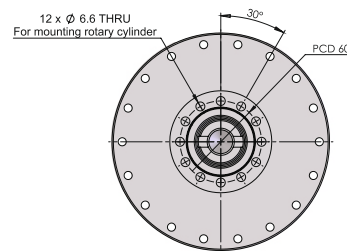
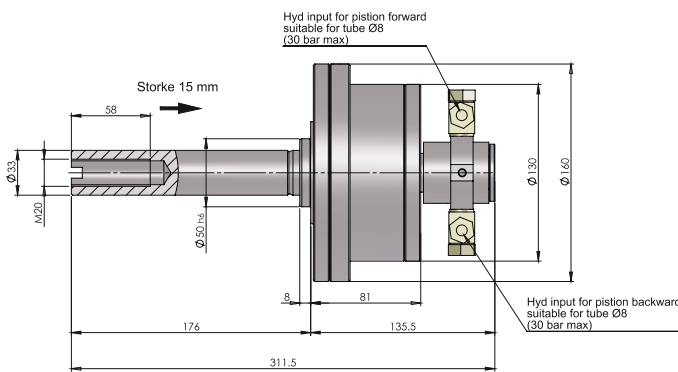
Chuck runout: 0.025mm



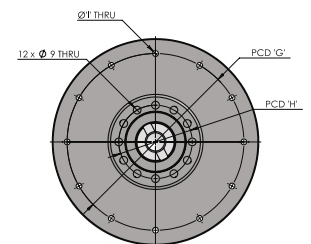
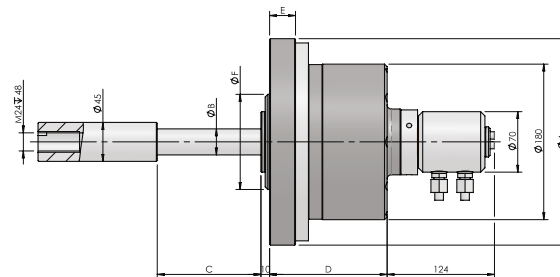
Hydraulic Rotary Cylinders

Specification

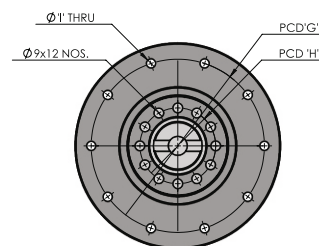
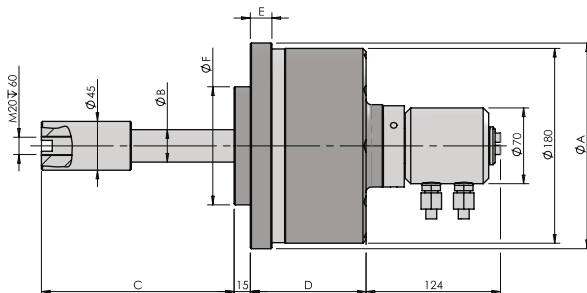
Model	Applicable Rotary Table	Clamp Thrust (Kg)	Stroke (mm)	Hydraulic Pressure (Bar)
URCX-100-15	URH-201	2000	15	30
URC-140-25S	URH-251	4250	25	30
URC-140-25B	URH-321	4250	25	30



URC-140-25B



URC-140-25S



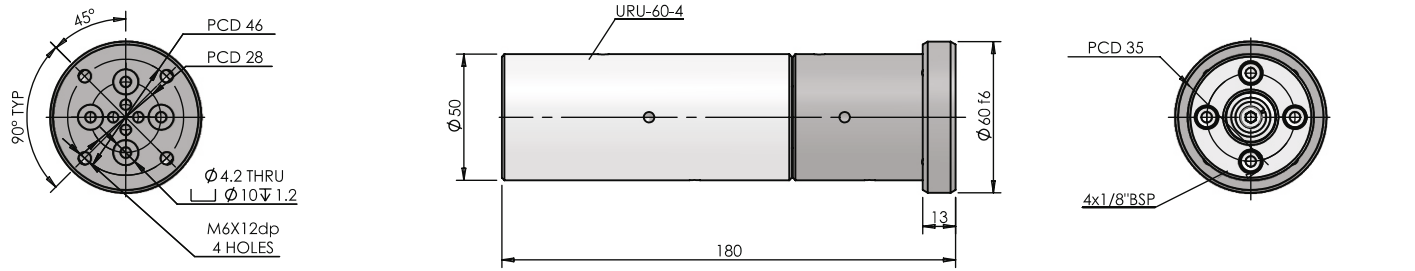
Dimensional Data

Model	A	B	C	D	E	F	G	H	I
URC-140-25S	190	28	210	107	20	109	160	70	6.8x10Nos
URC-140-25B	240	35	262	131	25	125	204.5	85	6.8x12Nos

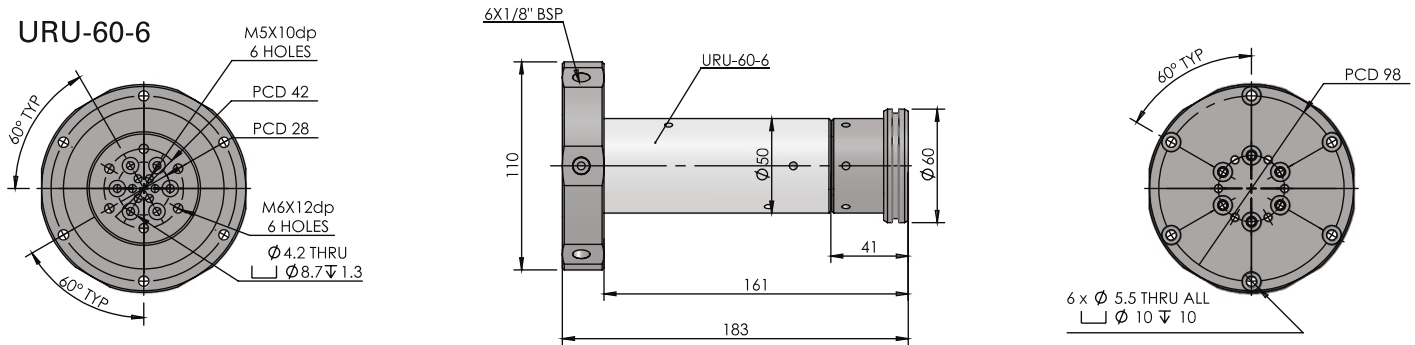
ACCESSORIES

Rotary Union

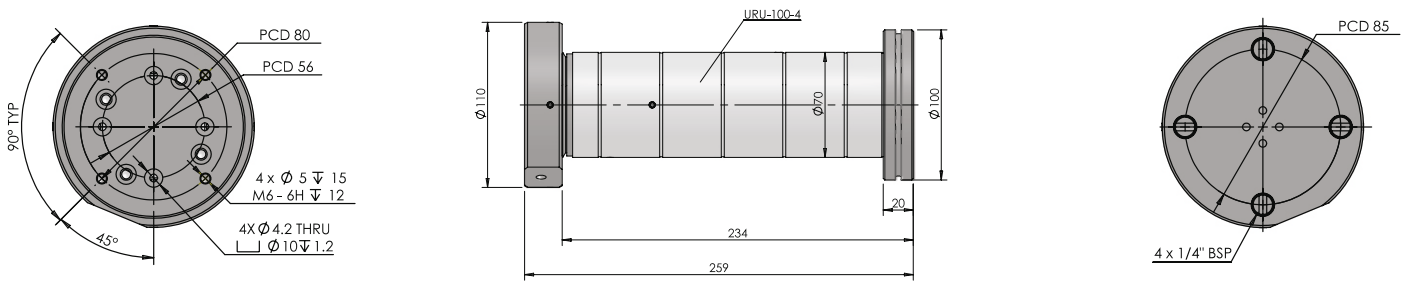
URU-60-4



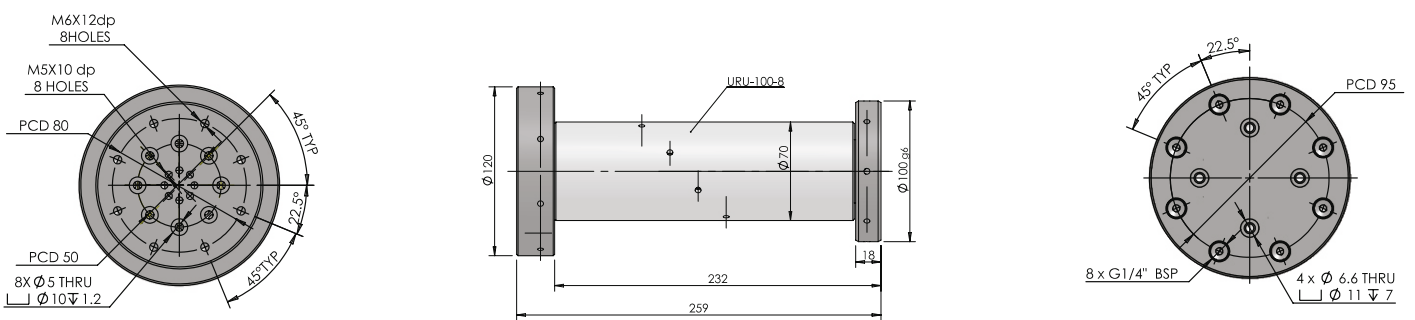
URU-60-6



URU-100-4



URU-100-8



*Above Rotary Union suitable for operating pressure upto 100 bar,
Request for special Rotary Union for operating pressure higher than 100 bar

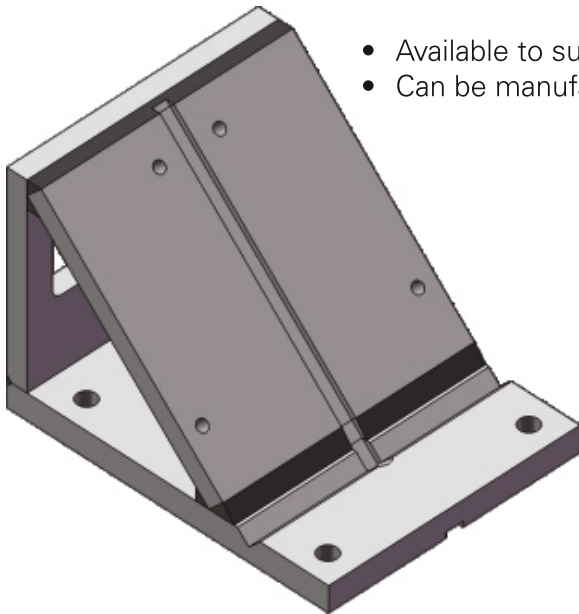
Dimensional Data

Model	For Rotary Table	No. of Lines	Input connection
URU - 60 - 4	URH-201 URH-251	4	G1/8" BSP
URU - 60 - 6	URH-201 URH-251	6	G1/8" BSP

Model	For Rotary Table	No. of Lines	Input connection
URU - 100-4	URH-321 URH-401	4	G1/4" BSP
URU - 100-8	URH-321 URH-401	8	G1/4" BSP



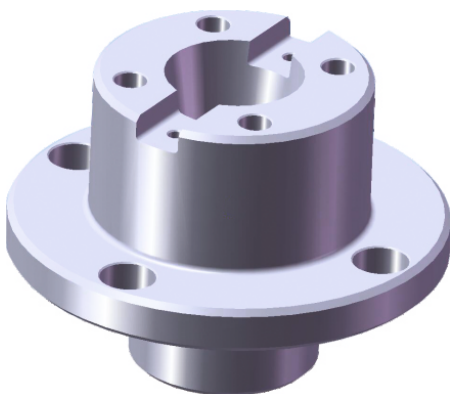
Angle Plate



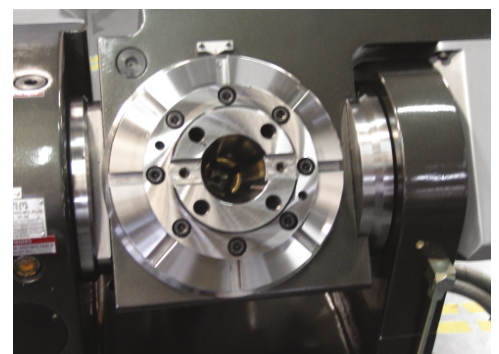
- Available to suit different models of Rotary Tables
- Can be manufactured to match required angles



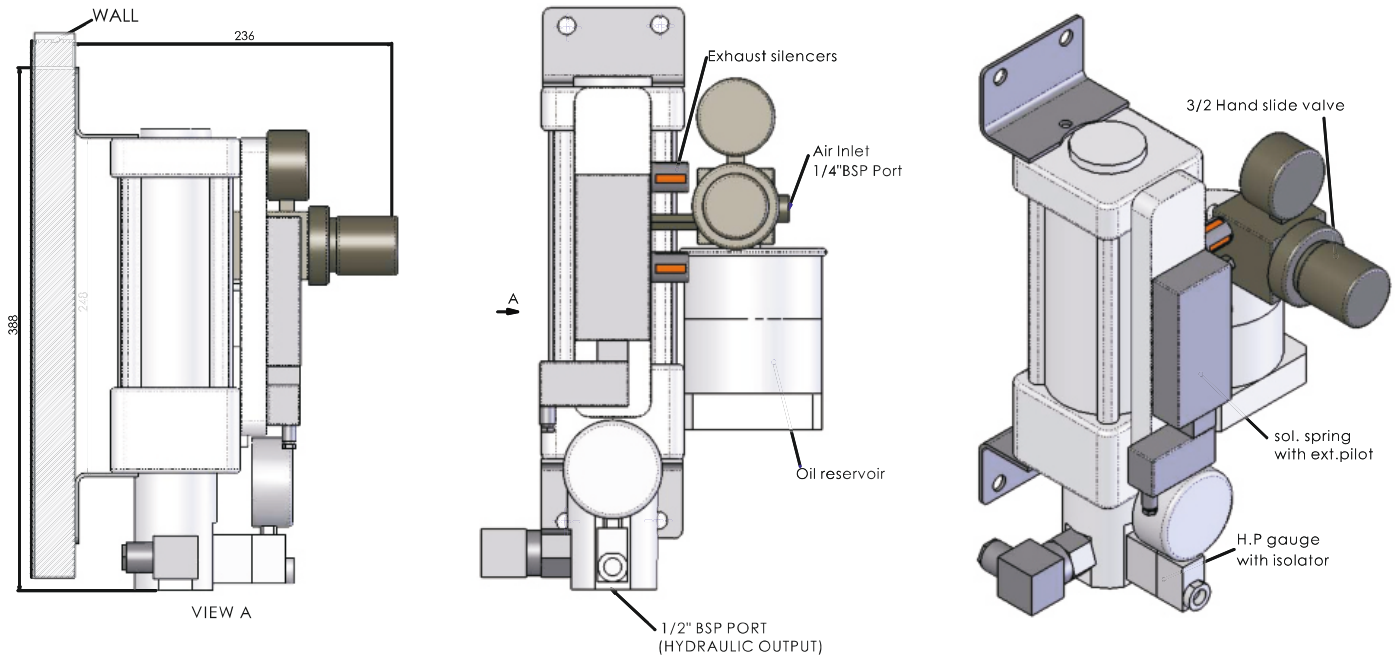
Taper Adaptor and Taper Center Bore



- Standard adaptors available for BT30, BT40, MT3, MT4 Tapers
- Dia 200 Rotary Tables and Tilting Tables also available with integrated taper center bore as option



Hydropneumatic Booster



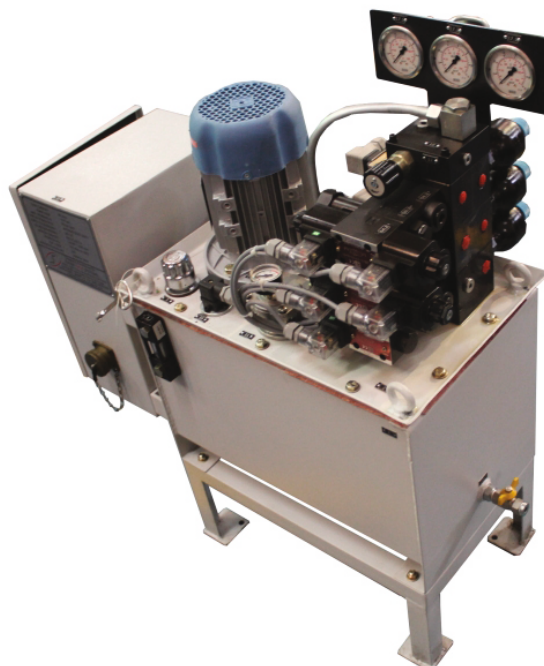
Specification

Model	Applicable Rotary Table	Applicable Rotary Production System	Applicable Tilting Table *
UHPB - 80	Dia - 150,170,180,200,250,320	Dia - 180, 200	Dia 150,200,250,320 (Rotary Axis)
UHPB - 100	Dia - 400,500,630	Dia -250, 320	Dia 320 (Tilt Axis)

* For Tilting Table 2 Hydro Pneumatic Booster are required

Hydraulic Power Pack

- Flow: 6.8/9/12lpm
- Pressure: 30 Bar Max.
- Solenoid valves and pressure switches depends on your applications
- Continuous duty





JAMUN - ROTARY AXIS CONTROLLER



New Jamun Series Single Axis Controller enables the user to rotate the Rotary Tables in a simple and effective way. The Graphical User Interface Design and touch screen inputs enables operator for ease of programming and settings. The Rotary Table can be operated in manual mood for wide range of movements or with a programme and make rotary units run automatically. The Rotary Table can be operated independently or interfaced with your machinery as an additional axis.

“ The best option for your machine where an extra axis feature is not available. ”

Technology :

- Capacitive type touch pad based Human Machine Interface (HMI)
- Graphical User Interface (GUI) with wire / wireless option and Wi-Fi communication
- Built on Single Board Computer (SBC) which runs on ARM Cortex-A53
- 17 bit absolute encoder for higher accuracies

Specification	
Description	Specifications
Minimum increment	0.001°
Programmable Angle	0-359.999°
In-put to system	Through HMI Pendant or android app & I/O's connector
Feed-rate	1-2000 RPM.
Programming Capacity	Standard ISO codes for programing. More than 500 programs upto 32GB
In-put Supply to System	Single phase 230V, 50Hz AC.
Mode selection after power on	Manual, Auto & Program manager.
System Memory	Expandable upto 2 TB
Limit switch	Hardware limit & software limits for safe range settings
Machine interfacing signals	24 V DC signal, Alarm signal possible for safety interlock
USB Interface	User Friendly USB 2.0 Interface
Servo Motor	AC servo motor with 17bit absolute encoder.



UCAM PVT. LTD.

Head Office:

A11/A12, 1st Stage, 1st Cross,
Peenya Industrial Area,
Bangalore - 560 058. INDIA.
Tel: +91 - 80 - 40744777,
Fax: +91 - 80 - 40744711
Email: sales@ucamind.com,
info@ucamind.com
www.ucamind.com

Factory:

Plot No. 297 & 298, 1st Stage,
Sompura KIADB Industrial Area,
Dobbaspeta, Sompura Hobli,
Nelamangala Taluk,
Bangalore Rural Dist – 562111. INDIA.



Hyfore Workholding Limited
Units 2 & 3, 67 Blackhorse Road,
Longford, Coventry, CV6 6DP

Tel: 024 7699 3153
Email: sales@hyfore.com
hyfore.com | hyfore.shop